

Telescope

CONTRACT FURNITURE USA | 1903

2025
CONTRACT
COLLECTION



MADE IN
USA

Proudly made in the USA Since 1903

Our 1,000,000 square foot facility in upstate New York means a huge variety of products, the best quality, and fast consistent delivery.

Who we are - Telescope Casual Furniture has remained a successful family-owned and operated U.S. manufacturer for over a century.

Since its founding in 1903, Telescope & the Vanderminden Family have relied on hardworking Americans to make the company successful. The workforce is the true backbone of the company and many current employees have been with the company for over 40 years.

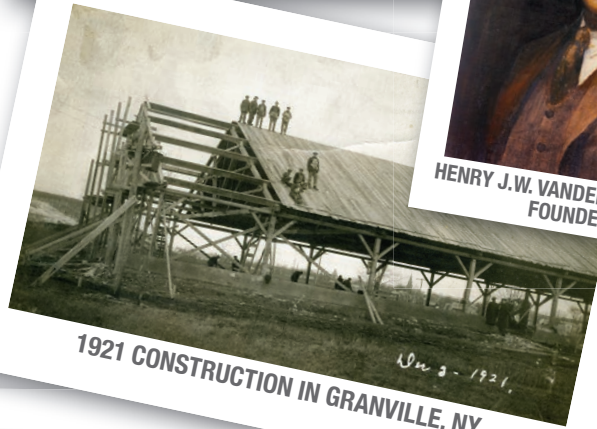
The family members at Telescope understand and are humbled by the awesome responsibility of the heritage that Telescope represents. All employees and customers alike are considered part of our extended family making this company stronger than ever.



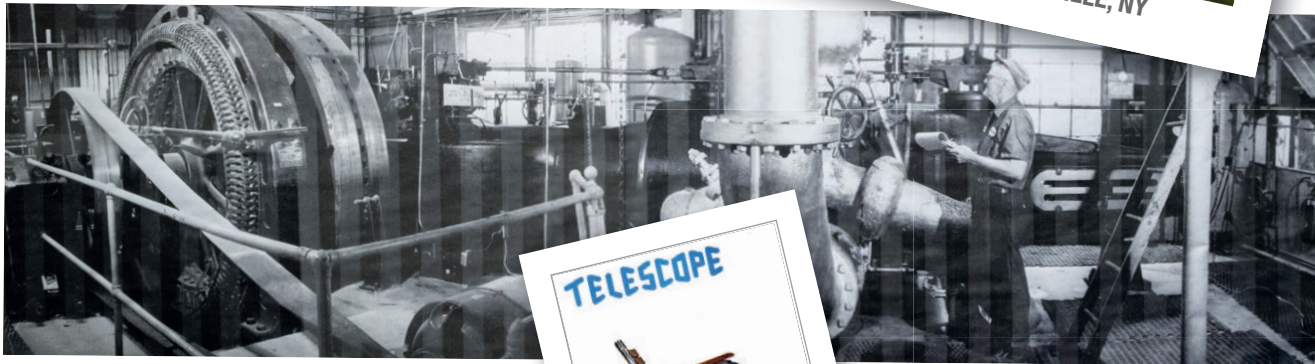
1903 WORKFORCE



HENRY J.W. VANDERMINDEN SR.
FOUNDER



1921 CONSTRUCTION IN GRANVILLE, NY



STEAM ENGINE GENERATING ELECTRICAL ENERGY
TO SUPPLY POWER THROUGHOUT OUR FACILITY

TELESCOPE



ALUMINUM FURNITURE 1957

FIRST FULL-FRAME
ALUMINUM CHAIR



1975 COMPANY PICNIC



2002 WORKFORCE



AERIAL IMAGE OF OUR FACTORY & OFFICES - PRESENT DAY



QUALITY INSPECTION PRIOR TO PACKAGING



WELDING A SUB-ASSEMBLY



RECENT 3X AWARD WINNER



THE TELESCOPE FAMILY - 2020



AMERICAN MADE, AMERICAN SOURCED

TELESCOPE CASUAL FURNITURE knows that designers work tirelessly on their efforts to create the best outdoor furniture experience for their customers, to remain relevant and to answer the demands of the growing category. Telescope has a proud tradition of creating new and original designs that have shaped the industry over our 122 years in business. We will continue to make every effort to protect our intellectual property rights, including the patents listed below and many other patents pending. In doing so, this helps us to continue to produce the great, Made-in-USA furniture you have come to know and love.

PATENT PROTECTION Telescope products are protected by the following U.S. patents:

7,363,930 / 8,230,869 / 8,302,616 / D-704,463 / D-711,661 / D-714,564 / D-716,069 / D-734,047 / D-749,335 / D-778,633 / 10,609,994 / 10,603,813 / D-876,855 / D-893,206 / D-910,357 / D-876,811 / 10,973,329 / 11,266,246 / D-927,216 / 11,518,063 / D-957,854 / D-961,314 / D-961,283 / D-1,040,978 and additional patents pending.

Table of Contents



**SLING FEATURES
& BENEFITS 4-5**



**SLING COLLECTIONS
6-17**



**SLING & PADDED
SLING FABRIC
SELECTION 18-22**



**STRAP FEATURES
& BENEFITS 24**



**STRAP COLOR
SELECTION 24**



**STRAP
COLLECTION 25**



**POLYMER/ALUMINUM
FEATURES & BENEFITS
26-27**



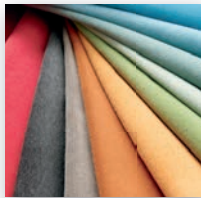
**POLYMER/ALUMINUM
COLLECTIONS 28-31**



**CUSHION
FEATURES &
BENEFITS 32-33**



**CUSHION
COLLECTIONS
34-40**



**CUSHION FABRIC
SELECTION 41-42**



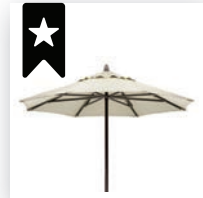
**PATIO HEATER
43-44**



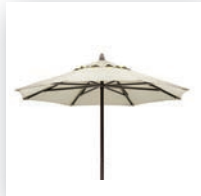
**FIRE TABLES
45-47**



**TRASH/TOWEL
RECEPTACLE 47**



**UMBRELLA
FEATURES &
BENEFITS 48**



**UMBRELLAS &
BASES 49-51**



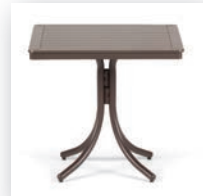
**FURNITURE
ACCESSORIES 51**



**OBSOLETE ACRYLIC
TABLE 52**



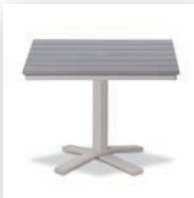
**VALUE HAMMERED
MGP TOP TABLES
52-53**



**MGP TOP SLAT
TABLES 53-55**



**MGP DASH TOP
TABLES 56-58**



**RUSTIC POLYMER
TOP TABLES
58-61**



**ORIGINS TOP
TABLES 61-62**



**MAINTENANCE,
WARRANTY & SERVICE
64-65**

HIGH PERFORMANCE POWDERCOAT FINISHES



WHAT IS AAMA 2604?



- Our Super Durable Powdercoat Finishes meet and exceed the strict performance requirements of the AAMA 2604 specification.
- The criteria & rigorous testing requirements are established by the FGIA (Fenestration & Glazing Industry Alliance), formerly known as the American Architectural Manufacturers Association (AAMA).
- *at least 5x the weathering performance* of a standard polyester powdercoat.
- Our powdercoat finishes were *required to pass over 20 AAMA 2604 certification tests*, below is a list of key AAMA standards and tests:

HUMIDITY RESISTANCE
SALT SPRAY RESISTANCE
FLORIDA EXPOSURE
COLOR RETENTION

3000 HOURS
3000 HOURS
5 YEARS
DELTA E <5

POLYMER YOU CAN CLEAN! OUR MGP IS CLEANABLE UNLIKE THE OTHERS!



OUR RESIN

SOLID RESIN 0% POROSITY

- CLEANABLE
- NONPOROUS SOLID RESIN
- CONSISTENT SURFACE FINISH
- WILL NOT ABSORB WATER
- RESISTANT TO MOST CHEMICALS
- WILL NOT CRACK, SEPARATE OR FADE IN ANY OUTDOOR ENVIRONMENT
- PRESENTS NO FIRE HAZARD
- MADE FROM ONLY FDA APPROVED RESINS



THEIR RESIN

COMPETITORS FOAMED RESIN

- POROUS FOAMED RESIN
- TRAPS OIL AND DIRT PARTICLES
- FOAMING ADDS AREAS WHERE MILDEW AND DIRT CAN PENETRATE THE SURFACE
- DIFFICULT TO FULLY CLEAN



FEATURES & BENEFITS SLING

SLING COLLECTIONS ON PP. 4-23

MARINE GRADE POLYMER

Available in 8 MGP frame colors and 82 outdoor quality commercial grade sling fabrics.

MGP will not crack, rot or separate in any outdoor environment.

All Slings are constructed with high performance outdoor quality fibers.

MGP color pigment is all through the material, so a slightly scratched surface is less noticeable.

Stainless steel hardware.

MGP has zero porosity, meaning it is easy to clean.

Slings are easy to replace.

No dangerous pinch points.

MGP is made from only FDA approved resins.

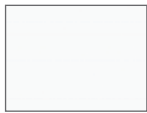
MGP is comfortable to the touch on hot and cold days.

Contains over 30% recycled resin.

Strong, durable construction.



STANDARD MGP FRAME FINISH SELECTION



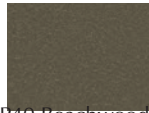
P50 Snow



PY0 Warm Grey



P60 Desert



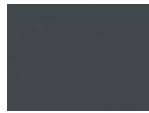
P40 Beachwood



P10 Kona



PF0 Storm



P30 Classic Graphite



P70 Black

SLING PRODUCTS BY STYLE * notates item is chat height or lower

DINING ARM CHAIRS



Leeward (p.6)
9530 MGP
90J0 Rustic



Leeward (p.6)
9410 MGP
90B0 Rustic



St. Catherine (p.9)
HH30 MGP
H030 Rustic



St. Catherine (p.9)
HH70 MGP
H070 Rustic



Belle Isle (p.11)
L010



Belle Isle (p.11)
L040



Belle Isle (p.11)
L070



Tribeca (p.13)
1T70

CHAT HEIGHT ARM CHAIRS



Aruba (p.14)
7A00



Aruba (p.14)
7A70



Gardenella (p.15)
7670



Adirondack (p.17)
9A70*



Wexler (p.8)
6W70 MGP*
X070 Rustic*



Kendall (p.12)
9K40*



Gardenella (p.15)
7610*

CAFÉ/BISTRO CHAIRS



Leeward (p.6)
Dune (p.7)
9500 MGP
90F0 Rustic



Leeward (p.6)
Dune (p.7)
9L10



Bazza (p.10)
2010



Bazza (p.10)
2050



Kendall (p.12)
9K10



Kendall (p.12)
Bazza (p.10)
9K50



Aruba (p.14)
7A10



Aruba (p.14)
5A10



Gardenella (p.15)
8L60

PORCH ROCKERS



Leeward (p.6)
9550 MGP
90M0 Rustic



Wexler (p.8)
6W30 MGP*
X030 Rustic *

OTTOMANS



Belle Isle (p.11)
L000



Adirondack (p.17)
9A00

POWDERCOATED ALUMINUM

Available in 9 powdercoated frame colors and 82 outdoor quality commercial grade sling fabrics.

Sleek & simple designs, perfect for every application.

Strong, extra durable construction.

Slings are easy to replace.

Durable Aluminum ratchets rest on plastic guards to protect finish.

No dangerous pinch points.

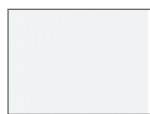
Multi-position back, including lay-flat.

Stainless steel hardware.

Durable replaceable plastic glides to protect patio surface.



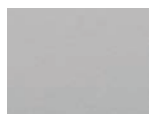
TEXTURED POWDERCOAT FRAME COLOR OPTIONS



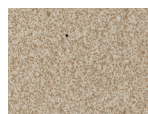
White



Snow



Warm Grey



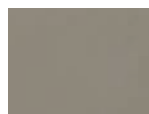
Desert



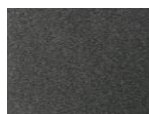
Beachwood



Kona



Storm



Graphite



Black

TWO & THREE SEATERS



Wexler (p.8)
6W40 MGP *
X040 Rustic *



Wexler (p.8)
6W50 MGP *
X050 Rustic *



Belle Isle (p.11)
L090

BALCONY & BAR CHAIRS



Leeward (p.6)
9580 Balcony MGP
90Q0 Balcony Rustic
9590 Bar MGP
90T0 Bar Rustic



Bazza (p.10)
Z080 Balcony
Z090 Bar



Belle Isle (p.11)
L0A0 Balcony
L0B0 Bar



Kendall (p.12)
9K80 Balcony
9K90 Bar



Bazza (p.10)
Kendall (p.12)
9K60 Balcony
9K70 Bar



Aruba (p.14)
7A80 Balcony
7A90 Bar



Aruba (p.14)
5A30 Balcony
5A40 Bar

CHAISES



Leeward (p.6)
9L20



Leeward (p.6)
9400



Dune (p.7)
9NN0



Dune (p.7)
9N80



Dune (p.7)
9N30



St. Catherine (p.9)
HH20 MGP
H020 Rustic



Bazza (p.10)
Z0S0



Belle Isle (p.11)
L020



Kendall (p.12)
9K30



Kendall (p.12)
9100



Aruba (p.14)
5A20



Aruba (p.14)
5790



Gardenella (p.15)
7L30



Gardenella (p.15)
7720



Gardenella (p.15)
8080



Helios (p.16)
70C0

Leeward MGP Sling

Marine Grade Polymer (MGP) / Aluminum Frame • Choice of MGP or Rustic Polymer Arms • Stainless Hardware
• Available in Sling & Mesh Padded Sling (see p. 22) • Available in Acrylic Padded Sling (see pp. 20-21)



9400 & 9L20
Chaises feature
integrated wheels in
back legs



THE MONTAGE
ALBANY, NY

W/ MGP ARMS



5YR

9410
Arm Chair
w/ MGP Arms
29"Wx38.5"Hx28.5"D
Item Weight: 24lbs



5YR

9500
Stacking Café Chair
w/ MGP Arms
28.5"Wx34"Hx26"D
Item Weight: 17lbs



5YR

9530
Supreme Arm Chair
w/ MGP Arms
29"Wx44.25"Hx28.5"D
Item Weight: 26lbs



5YR

9550
Supreme Rocker
w/ MGP Arms
29"Wx44"Hx31"D
Item Weight: 29lbs



5YR

9580
Balcony Height Swivel
Arm Chair w/ MGP Arms
28"Wx45"Hx26.5"D
Item Weight: 27lbs



5YR

9590
Bar Height Swivel Arm
Chair w/ MGP Arms
28"Wx49"Hx26.5"D
Item Weight: 29lbs

W/ RUSTIC ARMS



5YR

90B0
Arm Chair
w/ Rustic Arms
29"Wx38.5"Hx28.5"D
Item Weight: 23lbs



5YR

90F0
Stacking Café Chair
w/ Rustic Arms
28.5"Wx34"Hx26"D
Item Weight: 16.5 lbs



5YR

90J0
Supreme Arm Chair
w/ Rustic Arms
29"Wx44.25"Hx28.5"D
Item Weight: 25lbs



5YR

90M0
Supreme Rocker
w/ Rustic Arms
29"Wx44"Hx31"D
Item Weight: 28lbs



5YR

90Q0
Balcony Height Swivel
Arm Chair w/ Rustic Arms
28"Wx45"Hx26.5"D
Item Weight: 26lbs



5YR

90T0
Bar Height Swivel Arm
Chair w/ Rustic Arms
28"Wx49"Hx26.5"D
Item Weight: 28lbs

ARMLESS



5YR

9L10
Stacking Armless Side
Chair
21.5"Wx33.75"Hx23.5"D
Item Weight: 16lbs



5YR

9400
Stacking Armless Lay Flat
Chaise w/ Wheels
28"Wx41.5"Hx66"D
Reclined Length = 78"
Item Weight: 34lbs



5YR

9L20
Stacking Armless Long Frame
Lay Flat Chaise w/ Wheels
28.5"Wx43.75"Hx72"D
Reclined Length = 78"
Item Weight: 45lbs

Additional Features & Benefits Leeward MGP Sling

- Café Chair, Armless Side Chair, Armless Chaise and Armless Long Frame Lay Flat Chaise are all stackable items for easy storage!
- Stacking Armless Long Frame Lay Flat Chaise features an 18" seating height for easy in and out.
- Available with MGP or Rustic Polymer Arms.
- Coordinating cushion collection featured on pp.34-35.
- Add-on items: PCMS Universal Chaise Pad and HDPL Attachable Pillow available, see p.51 for details.



Dune MGP Sling

Marine Grade Polymer (MGP) / Aluminum Frame • Stainless Hardware

• Available in Sling & Mesh Padded Sling (see p. 22) • Available in Acrylic Padded Sling (see pp. 20-21)



9N30 & 9NNO
Chaises feature
integrated wheels in
back legs



VALLEY CENTER, CA



5YR

9L10

Stacking Armless Side Chair
21.5"Wx33.75"Hx23.5"D
Item Weight: 16 lbs



5YR

9500

Stacking Café Chair
28.5"Wx34"Hx26"D
Item Weight: 17 lbs



5YR

9N80

Stacking Hydro-Lounge™ Chaise
25.5"Wx39.75"Hx53"D
Item Weight: 35lbs

NEW
2025



5YR

9N30

Stacking Armless Contour Chaise
w/ Wheels
25.5"Wx40"Hx73.75"D
Reclined Length = 79"
Item Weight: 34lbs



5YR

9NNO

Stacking Armless Lay Flat Chaise
w/ Wheels
25.5"Wx43.5"Hx69"D
Reclined Length = 78"
Item Weight: 38lbs

Additional Features & Benefits DUNE MGP Sling

- All Dune items are stackable for easy storage!
- **9NNO Chaise** features a 16.5" seat height while the **9N30 Chaise** features a 14.5" seat height. Both designs feature a unique integrated ratchet which minimizes pinch points.
- **9N80 Stacking Hydro-Lounge™ Chaise** has a 16" seat height, perfect for usage on a pool ledge. The MGP frame is designed for both water and land use. The contour of this chaise is perfect for lounging in the pool.
- Add-on items: **PCMS Universal Chaise Pad** and **HDPL Attachable Pillow** available, see p.51 for details.



5YR = 5 Year Contract Warranty

3YR = 3 Year Contract Warranty

Wexler Sling

Marine Grade Polymer (MGP) Frame • Choice of MGP or Rustic Polymer Arms • Stainless Hardware
• Available in Sling & Mesh Padded Sling (see p. 22) • Available in Acrylic Padded Sling (see pp. 20-21)



THE MONTAGE
ALBANY, NY



W/ MGP ARMS



5YR

6W70
Chat Height Arm Chair
w/ MGP Arms
29.25"Wx33"Hx28"D
Item Weight: 26 lbs



5YR

6W30
Chat Supreme Rocker
w/ MGP Arms
29.75"Wx40.5"Hx32.75"D
Item Weight: 30 lbs



5YR

6W40
Chat Height Two-Seat
Loveseat w/ MGP Arms
50.75"Wx33"Hx28"D
Item Weight: 35 lbs



5YR

6W50
Chat Height Three-Seat
Sofa w/ MGP Arms
72.25"Wx33"Hx30"D
Item Weight: 45 lbs

Additional Features & Benefits Wexler Sling

- Full MGP Frame construction with stainless steel hardware allows this collection to withstand any elements.
- Available with Rustic Polymer Arms.
- Chat Height design makes for casual dining and ultra comfort.
- Collection features its own mid-century modern style end and coffee tables.
- **6W30/X030 Chat Supreme Rocker** features a higher back designed at the perfect height for resting your head.

W/ RUSTIC ARMS



5YR

X070
Chat Height Arm Chair
w/ Rustic Polymer Arms
29.25"Wx33"Hx28"D
Item Weight: 26 lbs



5YR

X030
Chat Supreme Rocker
w/ Rustic Polymer Arms
29.75"Wx40.5"Hx32.75"D
Item Weight: 30 lbs



5YR

X040
Chat Height Two-Seat
Loveseat w/ Rustic
Polymer Arms
50.75"Wx33"Hx28"D
Item Weight: 35 lbs



5YR

X050
Chat Height Three-Seat
Sofa w/ Rustic
Polymer Arms
72.25"Wx33"Hx30"D
Item Weight: 45 lbs



3YR

5W80
End Table
23"Wx19.75"Hx23"D
Item Weight: 12 lbs

Table Top Available in MGP
& Rustic Polymer



3YR

5W90
Coffee Table
42"Wx19.75"Hx24"D
Item Weight: 21 lbs

Table Top Available in MGP
& Rustic Polymer

St. Catherine Sling

Marine Grade Polymer (MGP) Frame • Choice of MGP or Rustic Polymer Arms • Stainless Hardware
• Available in Sling & Mesh Padded Sling (see p. 22) • Available in Acrylic Padded Sling (see pp. 20-21)



**SOAKY MOUNTAIN WATERPARK
SEVIERVILLE, TN**

W/ MGP ARMS



3YR

HH70
Arm Chair
w/ MGP Arms
26"Wx38"Hx29.75"D
Item Weight: 16lbs



3YR

HH30
Supreme Arm Chair
w/ MGP Arms
26"Wx43.5"Hx29"D
Item Weight: 16lbs



3YR

HH20
Four-Position Lay Flat Chaise
w/ MGP Arms
29"Wx43"Hx63.5"D
Reclined Length = 78.5"
Item Weight: 23lbs

W/ RUSTIC ARMS



3YR

H070
Arm Chair
w/ Rustic Polymer Arms
26"Wx38"Hx29.75"D
Item Weight: 16lbs



3YR

H030
Supreme Arm Chair
w/ Rustic Polymer Arms
26"Wx43.5"Hx29"D
Item Weight: 16lbs



3YR

H020
Four-Position Lay Flat Chaise
w/ Rustic Polymer Arms
29"Wx43"Hx63.5"D
Reclined Length = 78.5"
Item Weight: 23lbs

Additional Features & Benefits St. Catherine MGP Sling

- **Arm Chair, Supreme Arm Chair and Four-Position Lay Flat Chaise** are all designed with perfectly curved arms for maximum comfort.
- **Four Position Lay Flat Chaise** is constructed at a 16" seating height for easy in and out and is 78.5" when laid flat.
- Available with Rustic Polymer Arms.
- Coordinating cushion collection featured on p.36.
- Add-on items: **PCMS Universal Chaise Pad** and **HDPL Attachable Pillow** available, see p.51 for details.



Bazza Sling

Powder Coat Aluminum Frame • Choice of Marine Grade Polymer (MGP) or Rustic Polymer Arm Accents • Stainless Hardware
• Available in Sling & Mesh Padded Sling (see p. 22) • Available in Acrylic Padded Sling (see pp. 20-21)



Z0S0 Chaise
features integrated
wheels in back legs

KIVA DUNES GOLF CLUB
GULF SHORES, AL



5YR

Z010
Stacking Café Chair
w/ Polymer Arms
26.5"Wx35.5"Hx25"D
Item Weight: 10lbs



5YR

9K50
Stacking Armless
Café Chair
21.5"Wx35.5"Hx25.75"D
Item Weight: 11lbs



5YR

Z050
Bistro Stacking Chair
w/ Polymer Arms
21"Wx34"Hx26"D
Item Weight: 9lbs

NEW
2025



5YR

9K60
Stacking Balcony Height
Armless Café Chair
21.5"Wx43.5"Hx25.5"D
Item Weight: 13 lbs



5YR

Z080
Stacking Balcony Height
Café Chair w/ Polymer Arms
26.5"Wx43.5"Hx26.5"D
Item Weight: 14.5lbs

NEW
2025



5YR

9K70
Stacking Bar Height
Armless Café Chair
21.5"Wx47.5"Hx25.5"D
Item Weight: 14 lbs



5YR

Z090
Stacking Bar Height
Café Chair w/ Polymer Arms
26.5"Wx47.5"Hx26.5"D
Item Weight: 17lbs



5YR

Z0S0
Contour Armless Chaise w/ Polymer Overlay
30"Wx42.75"Hx86"D
Reclined Length = 86"
Item Weight: 43lbs



5YR

Z0C0
Add-on Chaise
Connector Kit
(set of 2)
*Sample shown above



5YR

Z0T0
Add-on 26.5" x 10.25" Chaise Table Connector Kit

Note: Z0T0 Chaise Table Connector includes a stem to secure an umbrella. #13 Base (see p.51) could be added for additional stability.

Additional Features & Benefits Bazza Sling

- **Bistro Stacking Chair, Stacking Armless Café Chair (dining, balcony & bar height)** are the perfect size to maximize the number of chairs around a table.
- **Contour Armless Chaise** has a 16" seating height for easy in and out. The chaise remains comfortably contoured in the reclined positions. **Add-on Chaise Connector Kits** easily connect multiple chaises to create a double, triple or quadruple chaise arrangement.
- Polymer Arms are available in 8 Standard MGP, 4 Accent MGP and 5 Rustic Polymer Colors.
- Coordinating Bench Collection on p.29.

Belle Isle Sling

Powder Coat Aluminum Frame • Choice of Marine Grade Polymer (MGP) or Rustic Polymer Arm Accents
• Available in Sling & Mesh Padded Sling (see p. 22) • Available in Acrylic Padded Sling (see pp. 20-21)



L070
Arm Chair
27.5"Wx39"Hx28.5"D
Item Weight: 12.5 lbs

5YR



L010
Supreme Arm Chair
27.5"Wx44"Hx28.5"D
Item Weight: 14 lbs

5YR



L040
Arm Chair w/ Multi-Position Back
28.5"Wx44"Hx30"D
Reclined Length: 46.5"
Item Weight: 17 lbs

5YR



L0A0
Balcony Height Swivel Arm Chair
27"Wx43.5"Hx30"D
Item Weight: 23 lbs

5YR



L0B0
Bar Height Swivel Arm Chair
27"Wx47"Hx31"D
Item Weight: 25 lbs

5YR



L090
Three Seat Sofa
71"Wx38.75"Hx29"D
Item Weight: 35 lbs

5YR



L000
Ottoman
26"Wx16"Hx19"D
Item Weight: 6 lbs

5YR



L020
Four Position Lay Flat Chaise
31"Wx39"Hx65.5"D
Reclined Length = 78.5"
Item Weight: 21 lbs

5YR

Additional Features & Benefits Belle Isle Sling

- All items except for the Ottoman feature a curved Polymer arm which adds not only style but is comfortable to the touch in any climate. The Powdercoated Aluminum Frame and the Polymer arms can be color matched or two-toned to suit your needs.
- **Arm Chair with Multi-Position Back** is perfect for both dining and relaxing! Use with the ottoman to make a two piece chaise for tighter spaces.
- **Four Position Lay Flat Chaise** features a seating height of 14" for easy in and out. The chaise has four easy-to-adjust positions and is 78.5" when laid flat.
- Polymer Arms are available in 8 Standard MGP, 4 Accent MGP and 5 Rustic Polymer Colors.
- Coordinating cushion collection on p.40.
- Add-on items: PCMS Universal Chaise Pad and HDPL Attachable Pillow available, see p.51 for details.



5YR = 5 Year Contract Warranty

3YR = 3 Year Contract Warranty

Kendall Sling

Powder Coat Aluminum Frame • Available in Sling & Mesh Padded Sling (see p. 22) • Available in Acrylic Padded Sling (see pp. 20-21)



FULTON HOMES
QUEENS CREEK, AZ

 <p>9K10 Stacking Café Chair 25.5"Wx35.5"Hx25"D Item Weight: 9 lbs</p> <p>5YR</p>	 <p>9K50 Stacking Armless Café Chair 21.5"Wx35.5"Hx25.75"D Item Weight: 11 lbs</p> <p>5YR</p>	 <p>9K40 Stacking Chat Chair 25"Wx38"Hx31.25"D Item Weight: 12 lbs</p> <p>5YR</p>	<p>NEW 2025</p>  <p>9K60 Stacking Balcony Height Armless Café Chair 21.5"Wx43.5"Hx25.5"D Item Weight: 13 lbs</p> <p>5YR</p>	 <p>9K80 Stacking Balcony Height Café Chair 25.5"Wx43.5"Hx26.5"D Item Weight: 14 lbs</p> <p>5YR</p>	<p>NEW 2025</p>  <p>9K70 Stacking Bar Height Armless Café Chair 21.5"Wx47.5"Hx25.5"D Item Weight: 14 lbs</p> <p>5YR</p>
 <p>9K90 Stacking Bar Height Café Chair 25.5"Wx47.5"Hx26.5"D Item Weight: 17 lbs</p> <p>5YR</p>	 <p>9100 Stacking Armless Lay Flat Chaise 25.75"Wx41"Hx66.75"D Reclined Length = 78.25" Item Weight: 21 lbs</p> <p>5YR</p>	 <p>9K30 Lay-flat Stacking High Bed Armless 18" Chaise 28"Wx43.75"Hx82"D Reclined Length = 82" Item Weight: 25 lbs</p> <p>5YR</p>	<h2>Additional Features & Benefits Kendall Sling</h2> <ul style="list-style-type: none"> • All Kendall items are stackable for easy/convenient storage! • This contemporary design features an extra-durable aluminum frame with replaceable plastic glides to protect patio surface. • Stacking Chat Chair provides chaise comfort while saving valuable space. • Stacking Armless Dining, Balcony & Bar Café Chairs are the perfect size to maximize the number of chairs around a table. • Stacking Armless Lay Flat Chaise features a 15" seating height for easy in and out. This chaise features a unique integrated reclining mechanism for a sleek contemporary appeal and to minimize pinch points. • Add-on items: PCMS Universal Chaise Pad and HDPL Attachable Pillow available, see p.51 for details. <div>   </div>		

Tribeca Sling

Powder Coat Aluminum Frame • Available in Standard Sling only



MIAMI, FL



1T70
Stacking Café Chair
24"Wx34"Hx24.5"D
Item Weight: 11 lbs

5YR



9K30
Lay-flat Stacking High Bed Armless 18" Chaise
28"Wx43.75"Hx82"D
Reclined Length = 82"
Item Weight: 25 lbs

5YR

Additional Features & Benefits Tribeca Sling

- **Stacking Café Chairs** are densely stackable for easy/convenient storage!
- The unique wrapped sling on the **Stacking Café Chair** provides a more upholstered look than traditional sling.
- Sharp contemporary lines are perfect for today's aesthetic.
- The small scale of this item is at home in any commercial setting.

5YR = 5 Year Contract Warranty

3YR = 3 Year Contract Warranty

Aruba Sling

Powder Coat Aluminum Frame • Available in Sling & Mesh Padded Sling (see p. 22) • Available in Acrylic Padded Sling (see pp. 20-21)



**H2OBX WATERPARK
POWELLS POINT, NC**



5YR

5A10
Dining Height
Armless Café Chair
17.5"Wx35.5"Hx25"D
Item Weight: 7 lbs



5YR

7A10
Stacking Café Chair
23.5"Wx33.25"Hx26"D
Item Weight: 7 lbs



5YR

7A70
Stacking Arm Chair
25"Wx34.75"Hx28.5"D
Item Weight: 8 lbs



5YR

7A00
Supreme Stacking
Arm Chair
25"Wx43.5"Hx29.25"D
Item Weight: 10 lbs



5YR

5A30
Balcony Height Armless
Café Chair
17.5"Wx43.5"Hx25.75"D
Item Weight: 8 lbs



5YR

7A80
Balcony Height Swivel
Café Chair
23.5"Wx41.5"Hx26"D
Item Weight: 15 lbs



5YR

5A40
Bar Height Armless
Café Chair
17.5"Wx47"Hx26.5"D
Item Weight: 9 lbs



5YR

7A90
Bar Height Swivel
Café Chair
23.5"Wx45.25"Hx26"D
Item Weight: 16 lbs



5YR

5A20
Four-Position Lay Flat Stacking Armless Chaise
28"Wx42.5"Hx66"D
Reclined Length = 78.25"
Item Weight: 18 lbs



5YR

5790
Four-Position High Bed Lay Flat Stacking Arm Chaise
27.75"Wx48"Hx65"D
Reclined Length = 77.5"
Item Weight: 18.5 lbs

Additional Features & Benefits Aruba Sling

- Many items stack for convenient storage.
- This collection celebrates 22 years of longevity, quality & value.
- The broad depth of this collection allows for a variety of seating applications that will coordinate beautifully.
- **Four Position High Bed Lay Flat Arm Chaise** features a seating height of 18" for easy in and out.
- Add-on items: PCMS Universal Chaise Pad and HDPL Attachable Pillow available, see p.51 for details.



Gardenella Sling

Powder Coat Aluminum Frame • Available in Sling & Mesh Padded Sling (see p. 22)
• Available in Acrylic Padded Sling (see pp. 20-21)

Featured
**LEGACY
COLLECTION**



THE RESORT AT MASSEY'S LANDING
MILLSBORO, DE



8L60
Stacking Bistro Chair
21"Wx34.5"Hx25.75"D
Item Weight: 7 lbs

5YR



7670
Stacking Arm Chair
24"Wx34"Hx28.5"D
Item Weight: 7 lbs

3YR



7610
Stacking Poolside Chair
24"Wx30"Hx32.5"D
Item Weight: 7 lbs

3YR



7720
Four-Position Stacking
Chaise
26.75"Wx46.75"Hx63"D
Reclined Length = 75.5"
Item Weight: 13 lbs

3YR



8080
Four-Position Lay Flat
Stacking Armless Chaise
26.5"Wx42.5"Hx66"D
Reclined Length = 77.5"
Item Weight: 15.5 lbs

3YR



7L30
Four-Position Lay Flat
Stacking Armless Chaise
27"Wx43"Hx69"D
Reclined Length = 78"
Item Weight: 16 lbs

5YR

Additional Features & Benefits Gardenella Sling

- Telescope first introduced the Gardenella Sling Collection in 1977. Over the last 48 years, we have learned that this simple yet wholesome collection is unstoppable. Reliance Sling has joined forces with our popular Gardenella Sling Collection. All former Reliance Sling items are now available in Gardenella Sling
- Every item in this collection is stackable for easy and convenient storage.
- **7L30 Four-Position Lay-Flat Stacking Armless Chaise** features a 16" seating height for easy in and out. 78" when laid flat.
- Over 1 million units built means this collection has stood the test of time.
- Add-on items: **PCMS Universal Chaise Pad** and **HDPL Attachable Pillow** available, see p.51 for details.



5YR = 5 Year Contract Warranty

3YR = 3 Year Contract Warranty

Helios Contract Sling

Powder Coat Aluminum Frame • Choice of Standard & Accent Marine Grade Polymer (MGP) or Rustic Polymer Arm Accents
 • Available in Sling & Mesh Padded Sling (see p. 22) • Available in Acrylic Padded Sling (see pp. 20-21)



LAKE MURRAY, SC



5YR

70C0
 Four Position Stacking Lay Flat Chaise
 27.75"Wx43"Hx69"D
 Reclined Length: 78"
 Item Weight: 21 lbs



Additional Features & Benefits Helios Sling

- Our contemporary Sling Chaise is available with your choice of 8 Standard MGP, 4 Accent MGP or 5 Rustic Polymer Arm Colors.
- **Four Position Stacking Lay Flat Chaise** stacks conveniently to maximize storage space.
- **PCMS Universal Chaise Pad** shown left and **HDPL Attachable Pillow** shown above are available as Add-on items. See p. 51 for details.

Adirondack MGP Sling

Marine Grade Polymer (MGP) / Aluminum Frame • Stainless Hardware

• Available in Sling & Mesh Padded Sling (see p. 22) • Available in Acrylic Padded Sling (see pp. 20-21)



Miami, FL



5YR

9A70
Chat Height Arm Chair
30.75"Wx38.5"Hx29.5"D
Item Weight: 24lbs

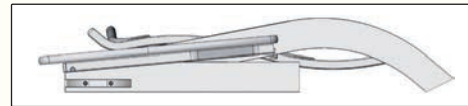


5YR

9A00
Ottoman
23"Wx14"Hx18"D
Item Weight: 9 lbs

Additional Features & Benefits Adirondack MGP Sling

- Wide polymer arms are comfortable to the touch on hot and cold days.
- This collection features hidden stainless steel hardware.
- Both chair and ottoman ship in flat UPS-able packaging, see image below.



5YR = 5 Year Contract Warranty

3YR = 3 Year Contract Warranty

MESH PADDED SLING

Sample images below: Gardenella 7670 Stacking Arm Chair



Sample images below: Gardenella 7720 Four-Position Stacking Chaise



Padded Sling is now available in Sling/Mesh fabric, See available sling fabrics on p.22.
Front and back of sling are the same pattern.
Sew across lines not only keep padding in all the right places, but add interest to the design

DECODING ITEM NUMBERS: MESH SLING VS. MESH PADDED SLING

MESH SLING



767Y-558-04

Chair Frame Style & Finish
Sling/Mesh Pat #
Pack Size

MESH PADDED SLING



767W-558-P4

Chair Frame Style & Finish
Sling/Mesh Pat #
Pack Size
Designates Padded Sling

ACRYLIC PADDED SLING

Sample images below: Gardenella 7670 Stacking Arm Chair



Sample images below: Gardenella 7720 Four-Position Stacking Chaise



Acrylic Padded Sling is constructed with a cushion fabric of your choosing, paired with a preselected coordinating sling fabric on the back. See pp. 20-21 for Acrylic Padded Sling Fabric Selection.

DECODING ITEM NUMBERS: MESH SLING VS. ACRYLIC PADDED SLING

MESH SLING



767Y-558-04

Chair
Frame
Style &
Finish

Sling/Mesh
Pat #

Pack Size

ACRYLIC PADDED SLING



767W-66A-04

Chair
Frame
Style &
Finish

Acrylic
Pat #

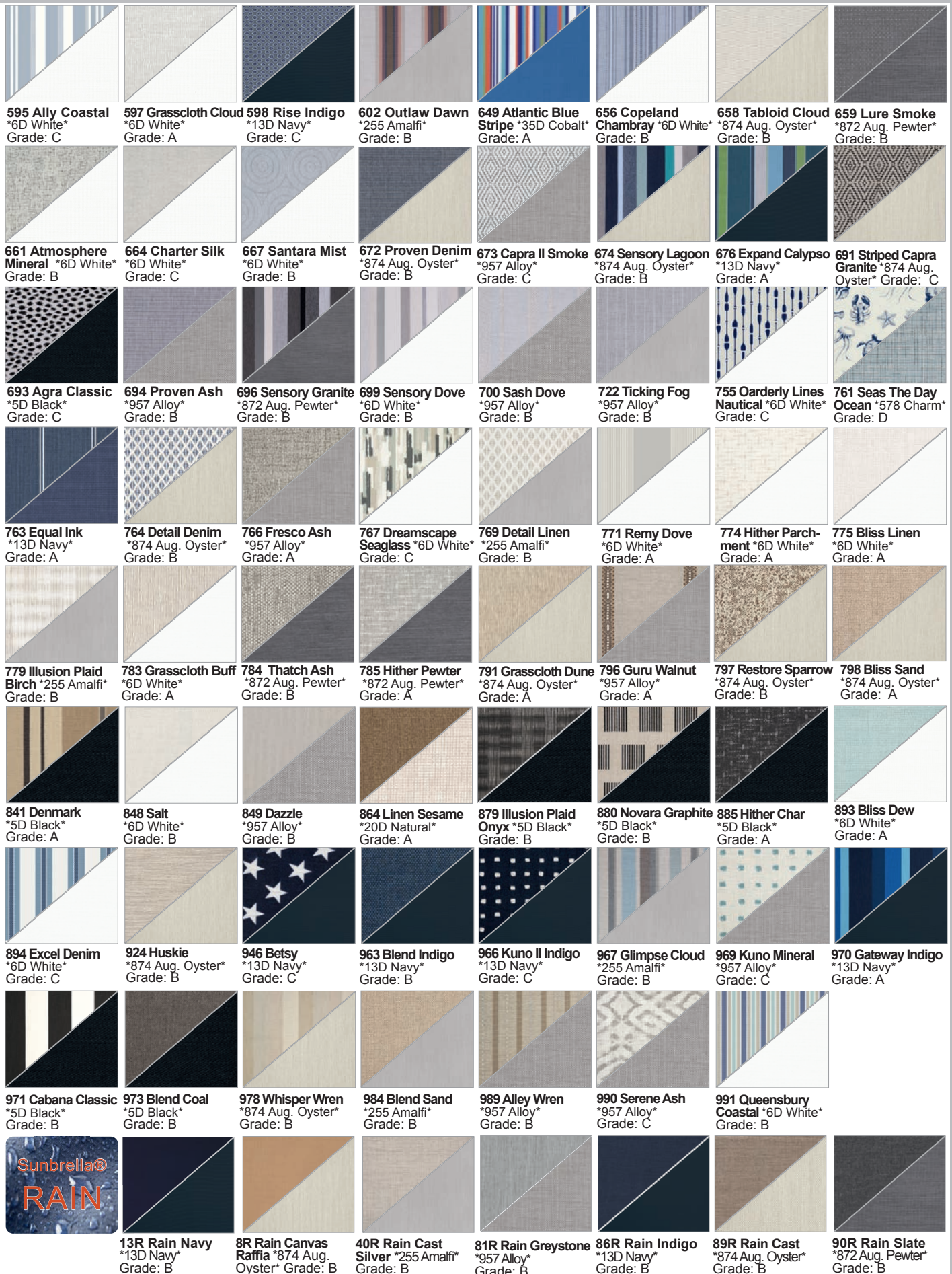
Pack Size

ACRYLIC PADDED SLING FABRIC SELECTION

Our Acrylic Padded Sling is constructed with a cushion fabric of your choosing, paired with a preselected coordinating sling fabric on the back. **Bold** text notates the Cushion Pattern, Asterisk (*) notates preselected coordinating sling fabric. To order: use **bold** cushion pattern number. Note: 6A White and 174 Nurture White are not available on Acrylic Padded Sling.

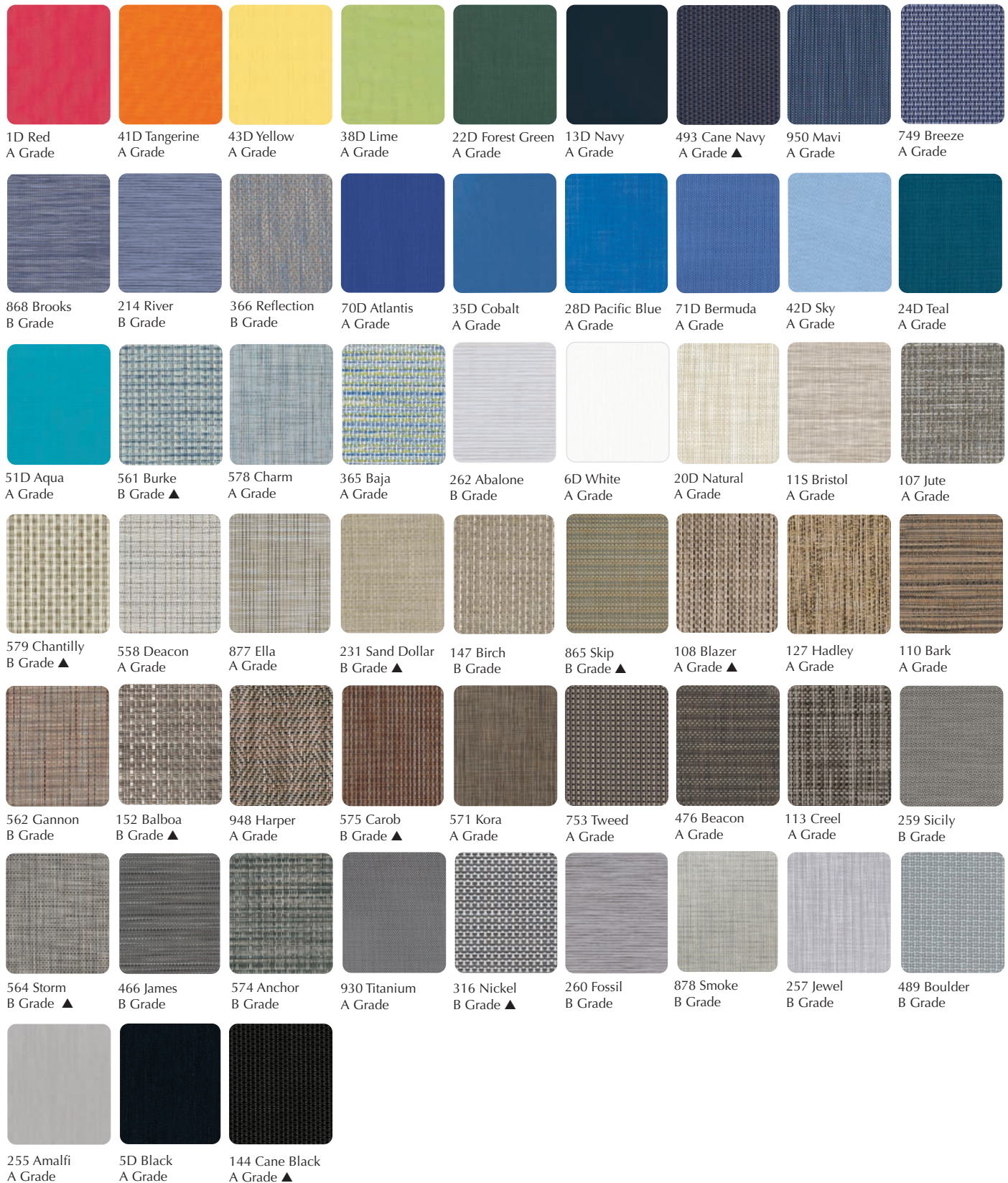


1A Red *1D Red* Grade: A	2A Canvas Seasalt *874 Aug. Oyster* Grade: A	4A Canvas Macaw *38D Lime* Grade: A	5A Black *5D Black* Grade: A
8A Canvas Raffia *874 Aug. Oyster* Grade: A	13A Navy *13D Navy* Grade: A	17A Champagne *874 Aug. Oyster* Grade: A	22A Forest Green *22D Forest Green* Grade: A
24A Cast Breeze *14D Augustine Mineral* Grade: A	27A True Blue *70D Atlantis* Grade: A	28A Pacific Blue *28D Pacific Blue* Grade: A	35A Cobalt *35D Cobalt* Grade: A
36A Stone Linen *5D Black* Grade: B	40A Cast Silver *255 Amalfi* Grade: A	41A Tangerine *41D Tangerine* Grade: A	42A Sky *42D Sky* Grade: A
43A Yellow *43D Yellow* Grade: A	44A Canvas Flax *874 Aug. Oyster* Grade: A	54A Stucco *874 Aug. Oyster* Grade: A	57A Aruba *51D Aqua* Grade: A
66A Azure *42D Sky* Grade: A	69A Mango *41D Tangerine* Grade: A	75A Wren *20D Natural* Grade: A	78A Mineral Blue *6D White* Grade: A
79A Peacock *24D Teal* Grade: A	81A Greystone *957 Alloy* Grade: A	86A Indigo *13D Navy* Grade: A	89A Cast *874 Aug. Oyster* Grade: A
90A Slate *872 Aug. Pewter* Grade: A	91A Canvas Henna *20D Natural* Grade: A	92A Cast Ivy *6D White* Grade: A	93A Canvas Persimmon *6D White* Grade: A
95A Canvas Haze *874 Aug. Oyster* Grade: A	136 Blue White Stripe *6D White* Grade: A	154 Dream Mist *6D White* Grade: B	164 Conte River *6D White* Grade: C
167 Nurture Indigo *13D Navy* Grade: B	168 Garcia Spring *6D White* Grade: C	172 Wayward Sky *42D Sky* Grade: C	173 Marvel Sage *6D White* Grade: A
184 Lively Sage *6D White* Grade: B	187 Benson Chive *6D White* Grade: B	188 Estelle Mineral *14D Augustine Mineral* Grade: D	192 Koto Clay *874 Aug. Oyster* Grade: C
193 Garcia Guava *874 Aug. Oyster* Grade: C	194 Wayward Charleston *874 Aug. Oyster* Grade: C	196 Remix Mesa *874 Aug. Oyster* Grade: A	197 Remix Camel *874 Aug. Oyster* Grade: A
198 Mainstreet Putty *874 Aug. Oyster* Grade: C	199 Benson Honey *6D White* Grade: B	212 Dream Dune *874 Aug. Oyster* Grade: B	251 Nurture Haze *874 Aug. Oyster* Grade: B
280 Conte Linen *874 Aug. Oyster* Grade: C	283 Marvel Linen *874 Aug. Oyster* Grade: A	286 Kismet Teak *874 Aug. Oyster* Grade: B	290 Kismet Wren *957 Alloy* Grade: B
293 Mainstreet Dove *957 Alloy* Grade: C	294 Benson Lagoon *6D White* Grade: B	298 Silver Lake Indigo *13D Navy* Grade: D	462 Sahara *20D Natural* Grade: B
495 Ross *6D White* Grade: B	496 Wyeth Trail Sunset *6D White* Grade: D	497 Marvel Mushroom *874 Aug. Oyster* Grade: A	584 Calm Laurel *6D White* Grade: C
587 Royal Guava *874 Aug. Oyster* Grade: B	591 Hither Twilight *13D Navy* Grade: A	593 Relate Harbor *6D White* Grade: A	594 Restore Indigo *13D Navy* Grade: B



SLING FABRIC SELECTION See our full line catalog for our complete fabric selection

Fabric for Sling Products Only... The fabrics below represent our most popular fabrics for Sling and Mesh Padded Sling (some exclusions) applications but we have 82 sling fabrics available in our full line catalog. For Acrylic Padded Sling fabric selection, see pp. 20-21.



▲ Symbol denotes fabric not available on HDPL Attachable Pillow or Mesh Padded Sling

RECENT INSTALLATIONS SLING & STRAP



**KARTRITE RESORT & INDOOR WATERPARK
MONTCELLO, NY**



SOAKY MOUNTAIN WATERPARK, SEVIERVILLE, TN



**THE RESORT AT MASSEY'S LANDING
MILLSBORO, DE**



**KARTRITE RESORT & INDOOR WATERPARK
MONTCELLO, NY**



**THE MONTAGE
ALBANY, NY**



**FULTON HOMES
QUEEN CREEK, AZ**

**FULTON HOMES
QUEEN CREEK, AZ**

FEATURES & BENEFITS STRAP

STRAP COLLECTIONS ON PP. 24-25

2" wide extruded vinyl straps made of 100% virgin vinyl and UV stabilizers for colorfastness.

Individual straps can be easily replaced if necessary.

Patented straps (US Patent #6,523,904) lock securely in specially designed channels.

Strong, durable construction.

14 Available strap colors, paired with 9 textured powdercoat frame finishes.

Stainless Steel and aluminum hardware resists corrosion.

Durable replaceable plastic glides protect patio surface.

Resilient strapping won't permanently sag after long use.

Create a custom design by mixing and matching strap colors.

Custom Strap Selection

The 2" Custom Strap colors listed below are available on our Reliance Contract Strap Collection. Note: There are no minimums on our custom strap program (other than our standard packs) but care must be taken when ordering to specify the desired straps and their arrangement on the chairs and chaises. Due to the custom nature of this product, there is a 50% deposit required on custom strap orders and a 30% Restocking Fee on any returned custom strap order.

White Pat# 066	Snow Pat# 057	Warm Grey Pat# 0YY	Desert Pat#0DD	Beachwood Pat# 0JJ	Kona Pat# 0KK	Storm Pat# 0FF	Graphite Pat# 0RR	Black Pat# 777
Pebble Pat# 001	Forest Green Pat# 042	Navy Pat# 0NN	Cobalt Pat# 035	Turquoise Pat# 028				

Textured Powdercoat Frame Color Options

White	Snow	Warm Grey	Desert	Beachwood	Kona	Storm	Graphite	Black

Reliance Contract Strap

Powder Coat Aluminum Frame • 2" Vinyl Welded Strap



THE KARTRITE RESORT & INDOOR WATERPARK
MONTICELLO, NY



5YR

8R60
Stacking Bistro Chair
21"Wx34.5"Hx25.75"D
Item Weight: 9 lbs



5YR

7R30
Four-Position Lay Flat Stacking Armless Chaise
27"Wx43"Hx69"D
Reclined Length = 78"
Item Weight: 21.25 lbs

Additional Features & Benefits Reliance Strap

- All Reliance Strap items are stackable for easy/convenient storage!
- **7R30 Four-Position Lay-Flat Stacking Armless Chaise** features a 16" seating height for easy in and out. 78" when laid flat.
- Create a custom look by mixing and matching your strap colors!
- For a Coordinating Sling Collection, Please see the Gardenella Sling Collection featured on p.15.
- Add-on items: **PCMS Universal Chaise Pad** and **HDPL Attachable Pillow** available, see p.51 for details.



FEATURES & BENEFITS POLYMER/ALUMINUM PRODUCTS

POLYMER/ALUMINUM COLLECTIONS ON PP. 26-31

All-weather design is tailor-made for outdoor dining areas.

Create a unique look with contrasting seat/frame color combinations!

MGP is made from only FDA approved resins.

Polymer will feel comfortable to the touch on hot or cold days.

Polymer color pigment is all through the material, so a slightly scratched surface is less noticeable.

Contains over 30% recycled resin.

All aluminum Rust-Free frame

Injection molded replaceable plastic plugs to protect the floor surface from excessive wear

Strong, durable construction.

Polymer surfaces designed to avoid water pooling.

Stainless steel hardware.

MGP has zero porosity, meaning it is easy to clean.

MGP and Rustic Polymer will not crack, rot or separate in any outdoor environment.

STANDARD MGP FRAME FINISH SELECTION



P50 Snow PY0 Warm Grey P60 Desert P40 Beachwood P10 Kona PF0 Storm P30 Classic Graphite P70 Black

TEXTURED POWDERCOAT FRAME COLOR OPTIONS

White Snow Warm Grey Desert Beachwood Kona Storm Graphite Black

POLYMER/ALUMINUM PRODUCTS BY STYLE

CHAT CHAIR



Newport (p.31)
1N30

DINING ARM CHAIRS



Bazza (p.29)
8Z60

BALCONY HEIGHT ARMLESS CHAIRS



Avant (p.28)
8930

Avant (p.28)
89C0

BENCHES



Bazza (p.29)
8Z40



Bazza (p.29)
8Z70



Bazza (p.29)
8Z80

ACCENT MGP COLOR SELECTION



PC0 Cranberry



PH0 Hunter



PQ0 Aqua



PN0 Navy

The Accent MGP Colors are only available in the following collections: Bazza Cushion, Bench and Sling, Avant, Newport, Belle Isle Cushion and Sling, Porch Swing, Plymouth Bay, Helios Sling, select MGP tables, select Fire tables and Patio Accessories.

RUSTIC POLYMER COLOR SELECTION



RG0 Cape Grey



RX0 Boardwalk



RU0 Chestnut



RT0 Teak



RL0 Laguna

The Rustic Polymer Colors are only available in the following collections: Leeward Cushion & Sling, St. Catherine Cushion & Sling, Larssen Cushion, Welles Cushion, Belle Isle Cushion & Sling, Porch Swing, Bazza Cushion, Bench and Sling, Plymouth Bay, Avant, Newport, Helios Sling, Rustic Polymer Top tables, select Fire tables and Patio Accessories.

PICNIC TABLE



Plymouth Bay (p.30)
1P80

ARMLESS DINING CHAIRS



Avant (p.28)
8900



Avant (p.28)
89L0

BAR HEIGHT ARMLESS CHAIRS



Avant (p.28)
8940



Avant (p.28)
89B0

Avant

Powder Coat Aluminum Frame • Choice of Marine Grade Polymer or Rustic Polymer seat/back with Vertical Slat Pattern



8900
Stacking Bistro Chair
15.5"Wx32.75"Hx20.25"D
Item Weight: 8 lbs



89L0
Stacking Dining Chair
19"Wx34"Hx24"D
Item Weight: 16 lbs



8930
Balcony Height Stacking Chair
15.75"Wx40.5"Hx20.25"D
Item Weight: 12 lbs



89C0
Balcony Height Swivel Chair (360°)
16.5"Wx40"Hx19.5"D
Item Weight: 16 lbs



8940
Bar Height Stacking Chair
16.75"Wx44.5"Hx20.25"D
Item Weight: 14 lbs



89B0
Bar Height Swivel Chair (360°)
18"Wx44"Hx19.5"D
Item Weight: 17 lbs

Additional Features & Benefits Avant

- **8900, 89L0, 8930, 8940 chairs** are stackable for easy and convenient storage! (See image to right)
- Available in 9 powdercoat frame finishes, 12 MGP colors and 5 Rustic Polymer Colors
- Efficiently sized frame with small footprint is perfect for restaurant applications where space is a premium.
- All Avant items will have a vertical slat seat/back pattern on all items.
- Frame is fully welded for extra durability.
- Features plastic bumpers on footrest
- Create a unique look with contrasting seat/back and frame colors.



Bazza Bench

Powder Coat Aluminum Frame • Choice of Marine Grade Polymer (MGP) or Rustic Polymer Surface • Stainless Hardware



ACTIVE INGREDIENT BREWING
MALTA, NY



8Z60
Stacking Bistro Chair
21"Wx34"Hx24.5"D
Item Weight: 19 lbs

5YR



8Z40
Stacking 56" Armless Bench
56"Wx35.75"Hx26"D
Item Weight: 44 lbs

5YR



8Z70
54" Flat Bench
54"Wx18"Hx17.5"D
Item Weight: 25 lbs

5YR



8Z80
64" Flat Bench
64"Wx18"Hx17.5"D
Item Weight: 37 lbs

5YR

Additional Features & Benefits Bazza

- Select Bazza items stack for easy and convenient storage! (See image right)
- All Bazza items are available in 9 powdercoated frame finishes, 12 MGP Seat/Back Colors and 5 Rustic Polymer Seat/Back Colors.
- Seat and back feature through holes for maximum comfort and aesthetic flare.
- The Polymer surface will remain comfortable to the touch on hot or cold days.
- Coordinating sling collection featured on p. 10.



MGP Seat/Back patterns will have a horizontal slot pattern as shown above.

5YR = 5 Year Contract Warranty

3YR = 3 Year Contract Warranty

Plymouth Bay

Powder Coat Aluminum Frame • Choice of Marine Grade Polymer (MGP) or Rustic Polymer Surface • Stainless Hardware



MAKE-A-WISH
TRUMBULL, CT



Additional Features & Benefits Plymouth Bay

- Available in 9 powdercoated frame finishes, 12 MGP Colors and 5 Rustic Polymer Colors.
- Table features an umbrella hole.
- Seat is designed with through holes for maximum comfort and aesthetic flare.
- The Polymer surfaces will remain comfortable to the touch on hot or cold days.



1P80
Picnic Table
64"Wx29"Hx66.25"D
Item Weight: 120 lbs
Seat Height: 18"

5YR

Newport

Powder Coat Aluminum Frame • Choice of MGP and Rustic Polymer Surface • Stainless Hardware



MAKE-A-WISH
TRUMBULL, CT



1N30
Adirondack Chair
30"Wx37.5"Hx32"D
Item Weight: 31 lbs

5YR

Additional Features & Benefits Newport

- Frame features durable aluminum construction with stainless steel hardware.
- Available in 9 powdercoated frame finishes, 12 MGP Seat/Back Colors and 5 Rustic Polymer Seat/Back Colors.
- Color and wood grain go completely through the material so small scratches are less noticeable.
- Polymer surface will remain comfortable to the touch on hot or cold days.

FEATURES & BENEFITS Cushion

CUSHION COLLECTIONS ON PP. 32-42

MARINE GRADE POLYMER



STANDARD MGP FRAME FINISH SELECTION



P50 Snow



PY0 Warm Grey



P60 Desert



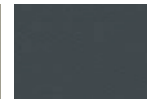
P40 Beachwood



P10 Kona



PF0 Storm



P30 Classic Graphite



P70 Black

ACCENT MGP COLOR OPTIONS (Available on select items)



PH0 Hunter



PC0 Cranberry



PQ0 Aqua



PN0 Navy

CUSHION PRODUCTS BY STYLE

ARM / ARMLESS CHAIR



Leeward (p.34)
86A0 MGP
J0A0 Rustic



Leeward (p.35)
8610 MGP
J010 Rustic



St. Catherine (p.36)
KK70 MGP
K070 Rustic



Larssen (p.37)
1L70 No Accent
Q070 w/ Accent



Bazza (p.38)
Z0A0



Welles (p.39)
D070 No Welting



Welles (p.39)
D0F0 No Welting



Welles (p.39)
D080 no Welting



Belle Isle (p.40)
B070

OTTOMAN



Belle Isle (p.40)
B010



Belle Isle (p.40)
B020



Leeward (pp.34-35)
St. Catherine (p.36)
85S0



Larssen (p.37)
AA00



Bazza (p.38)
Z000



Welles (p.39)
D0T0 No Welting



Belle Isle (p.40)
B000

CUSHION CHAISE



Leeward (p.34)
86N0

TWO SEAT LOVESEAT



Leeward (p.34)
86K0 MGP
J0K0 Rustic



Leeward (p.35)
8640 MGP
J040 Rustic



St. Catherine (p.36)
KK40 MGP
K040 Rustic



Larssen (p.37)
1L40 No Accent
Q040 w/ Accent



Bazza (p.38)
Z0D0



Welles (p.39)
D040 No Welting

TEXTURED POWDERCOATED ALUMINUM

Choose MGP or Rustic Polymer Arms on select collections.

All cushions are constructed with your choice of 140 high performance outdoor quality fabrics.

Available in our 9 powdercoated frame colors.

Vinyl Strap Suspension for seat provides long term comfort.

Strong, extra durable construction.

Choose your own eye catching color combinations.

Cushions are easy to replace.

Breathable cushions assist drying and extends the life of the cushion.

Durable replaceable plastic glides protect patio surface.

Stainless steel hardware.



TEXTURED POWDERCOAT FRAME COLOR OPTIONS



White

Snow

Warm Grey

Desert

Beachwood

Kona

Storm

Graphite

Black

RUSTIC POLYMER COLOR OPTIONS (Available on select items)



RG0 Cape Grey



RX0 Boardwalk



RU0 Chestnut



RT0 Teak



RL0 Laguna

THREE SEAT SOFA



Leeward (p.34)
86Q0 MGP
J0Q0 Rustic



Leeward (p.35)
8650 MGP
J030 Rustic



St. Catherine (p.36)
KK50 MGP
K050 Rustic



Larssen (p.37)
1L50 No Accent
Q050 w/ Accent



Bazza (p.37)
Z0F0



Welles (p.39)
D030 No Welting



Belle Isle (p.40)
B090

SECTIONALS

END SECTIONS



Leeward (p.35)
8550 MGP
J050 Rustic



Leeward (p.35)
8540 MGP
J020 Rustic



Larssen (p.37)
VL10 No Accent
Q010 w/ Accent

ARMLESS SECTIONS



Leeward (p.35)
8510



Leeward (p.35)
85D0



Larssen (p.37)
VL30

CORNER SECTIONS



Leeward (p.35)
8560



Larssen (p.37)
VL60



Larssen (p.37)
VLC0



Larssen (p.37)
AC00

SECTIONAL OTTOMANS



Leeward (p.35)
85S0



Larssen (p.37)
AA00



Larssen (p.37)
AC00

Leeward MGP Supreme Cushion

Marine Grade Polymer (MGP) Frame • Stainless Hardware • Available in Sunbrella® Rain & Sunbrella® Stock Book Program



W/ MGP ARMS

NEW
2025



86A0
Supreme Hidden Motion
Arm Chair w/ MGP Arms
33"Wx43"Hx37"D
Item Weight: 62 lbs

3YR

NEW
2025



86K0
Supreme Hidden Motion
Loveseat w/ MGP Arms
56.5"Wx43"Hx37"D
Item Weight: 88 lbs

3YR

NEW
2025



86Q0
Supreme Three-Seat Sofa
w/ MGP Arms
77.5"Wx42"Hx38"D
Item Weight: 104 lbs

3YR



85S0
Ottoman
23"Wx19"Hx23"D
Item Weight: 21 lbs

3YR



NCT0
Ottoman Clip
(Set of 2 available separately
for use w/ 85S0 Ottoman)

3YR

W/ RUSTIC ARMS

NEW
2025

RUSTIC



J0A0
Supreme Hidden Motion
Arm Chair w/ Rustic Arms
33"Wx43"Hx37"D
Item Weight: 60 lbs

3YR

NEW
2025

RUSTIC



J0K0
Supreme Hidden Motion
Loveseat w/ Rustic Arms
56.5"Wx43"Hx37"D
Item Weight: 86 lbs

3YR

NEW
2025

RUSTIC



J0Q0
Supreme Three-Seat Sofa
w/ Rustic Arms
77.5"Wx42"Hx38"D
Item Weight: 102 lbs

3YR



85S0
Ottoman
23"Wx19"Hx23"D
Item Weight: 21 lbs

3YR



NCT0
Ottoman Clip
(Set of 2 available separately
for use w/ 85S0 Ottoman)

3YR

ARMLESS CHAISE & ACCESSORIES (STANDARD HEIGHT)



86N0
Three-Position Lay Flat Armless Chaise
23"Wx43.5"Hx77.5"D
Reclined Length: 77.5"
Item Weight: 56 lbs

3YR



Z0C0
Add-on Chaise
Connector Kit
(Set of 2)

5YR

NEW
2025

RUSTIC



80V0
Arm Kit for 86N0 Armless Chaise
(Includes Left & Right Arm)
Arm Height: 24"

3YR



86N0 Cushion Chaise shown
with 80V0 Arm Kit installed

Available w/ MGP
& Rustic Arms

Leeward MGP Cushion

Marine Grade Polymer (MGP) Frame • Stainless Hardware • Available in Sunbrella® Rain & Sunbrella® Stock Book Program



SOAKY MOUNTAIN WATERPARK
SEVIERVILLE, TN



W/ MGP ARMS



8610 **3YR**
Hidden Motion Arm Chair
w/ MGP Arms
33"Wx38"Hx35"D
Item Weight: 60 lbs



8640 **3YR**
Hidden Motion Loveseat
w/ MGP Arms
56.5"Wx38"Hx35"D
Item Weight: 84 lbs



8650 **3YR**
Three-Seat Sofa
w/ MGP Arms
77.5"Wx37"Hx36"D
Item Weight: 98 lbs

W/ RUSTIC ARMS



J010 **3YR**
Hidden Motion Arm Chair
w/ Rustic Arms
33"Wx38"Hx35"D
Item Weight: 58 lbs



J040 **3YR**
Hidden Motion Loveseat
w/ Rustic Arms
56.5"Wx38"Hx35"D
Item Weight: 82 lbs



J030 **3YR**
Three-Seat Sofa
w/ Rustic Arms
77.5"Wx37"Hx36"D
Item Weight: 96 lbs

SECTIONAL ITEMS W/ MGP ARMS



8540 **3YR**
Left Arm Two-Seat Hidden
Motion Sectional
w/ MGP Arm
52"Wx38.5"Hx34.5"D
Item Weight: 74 lbs



8550 **3YR**
Right Arm Two-Seat Hidden
Motion Sectional
w/ MGP Arm
52"Wx38.5"Hx34.5"D
Item Weight: 74 lbs



J020 **3YR**
Left Arm Two-Seat Hidden
Motion Sectional
w/ Rustic Arm
52"Wx38.5"Hx34.5"D
Item Weight: 73 lbs



J050 **3YR**
Right Arm Two-Seat Hidden
Motion Sectional
w/ Rustic Arm
52"Wx38.5"Hx34.5"D
Item Weight: 73 lbs

ARMLESS SECTIONAL ITEMS, TABLES & ACCESSORIES



8560 **3YR**
Corner Fixed Sectional
34.5"Wx38.5"Hx34.5"D
Item Weight: 48 lbs



85D0 **3YR**
Armless Single-Seat Hidden
Motion Sectional
23.5"Wx38.5"Hx34.5"D
Item Weight: 36 lbs



8510 **3YR**
Armless Single-Seat Fixed
Sectional
23.5"Wx38.5"Hx34.5"D
Item Weight: 35 lbs



85S0 **3YR**
Ottoman (Sectional)
23"Wx19"Hx23"D
Item Weight: 21 lbs



NCT0 **3YR**
Ottoman Clip
(Set of 2 available
separately for use w/
85S0 Ottoman)



LCT0 **3YR**
Furniture Clip
(Set of 2 included with each
sectional seating piece)



50F0 **3YR**
Polymer Top Attachable
Accessory Table
28.5"Wx14"Hx28.5"D
Item Weight: 26 lbs
(Compatible with Leeward &
Larsen Cushion Sectionals)



50N0 **3YR**
Polymer Top Attachable
Corner Table
28.5"Wx21.5"Hx28.5"D
Item Weight: 29 lbs
(Compatible with Leeward &
Larsen Cushion Sectionals)



TCT0 **3YR**
Attachable Table
Connector Kit
(Set of 2 included with
50N0 & 50F0 tables)

Additional Features & Benefits Leeward MGP Cushion

- Collection now available in Supreme Height.
- Coordinates with our Leeward Sling Collection featured on p.6.
- Extra wide arm provides extra comfort and is comfortable to the touch on hot and cold days.
- Available with MGP or Rustic Polymer Arms.
- Vinyl strap suspension on seat and back provides long term comfort.
- Fabric panel over frame on back provides an upholstered look.
- 86N0 Cushion Chaises can be connected using ZOC0 Chaise Connector Kit.

Tops Now Available in MGP & Rustic

5YR = 5 Year Contract Warranty

3YR = 3 Year Contract Warranty

St. Catherine Cushion

Marine Grade Polymer (MGP) Frame • Choice of Marine Grade Polymer (MGP) or Rustic Polymer Arms • Stainless Hardware
• Available in Sunbrella® Rain & Sunbrella® Stock Book Program



H20BX WATERPARK
POWELLS POINT, NC



W/ MGP ARMS



KK70
Arm Chair
w/ MGP Accents
30"Wx36.25"Hx35.25"D
Item Weight: 33.25 lbs

3YR



KK40
Two-Seater Loveseat w/
MGP Accents
52"Wx36.25"Hx35.25"D
Item Weight: 54.25 lbs

3YR



KK50
Three-Seater Sofa
w/ MGP Accents
74"Wx36.25"Hx35.25"D
Item Weight: 67.25 lbs

3YR



85S0
Ottoman
23"Wx19"Hx23"D
Item Weight: 21 lbs

3YR

Additional Features & Benefits St. Catherine MGP Cushion

- Stationary ruggedly constructed items perfect for contract settings.
- Available with Rustic Polymer Arms.
- Vinyl strap suspension on seat and back provides long term comfort.
- Fabric panel over frame on back provides an upholstered look.
- Coordinating Sling Collection featured on p.9.

W/ RUSTIC ARMS



K070
Arm Chair
w/ Rustic Accents
30"Wx36.25"Hx35.25"D
Item Weight: 31.75 lbs

3YR



K040
Two-Seater Loveseat
w/ Rustic Accents
52"Wx36.25"Hx35.25"D
Item Weight: 52.75 lbs

3YR



K050
Three-Seater Sofa
w/ Rustic Accents
74"Wx36.25"Hx35.25"D
Item Weight: 65.75 lbs

3YR



85S0
Ottoman
23"Wx19"Hx23"D
Item Weight: 21 lbs

3YR

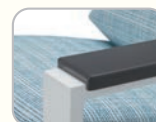
Larssen Cushion

Powdercoated Aluminum Frame • Available with or without MGP or Rustic Polymer Arm Accent
• Available in Sunbrella® Rain & Sunbrella® Stock Book Program

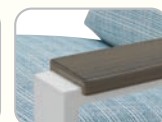


Additional Features & Benefits Larssen Cushion

- Clean contemporary style perfect for today's modern resorts.
- Wide arm provides extra comfort.
- Vinyl strap suspension on seat and back provides long term comfort.
- Arm Chair, Two-Seat Loveseat and Three Seat Sofa feature fabric panel over frame on back providing an upholstered look.



MGP Arm Accent



Rustic Arm Accent

THE MONTAGE
ALBANY, NY

W/ MGP OR RUSTIC POLYMER ARM ACCENT

NEW
2025

RUSTIC



Q070

Arm Chair
w/ Polymer Arm Accents
30.5"Wx35.5"Hx33"D
Item Weight: 26 lbs

3YR

NEW
2025

RUSTIC



Q040

Two-Seat Loveseat
w/ Polymer Arm Accents
53"Wx35.5"Hx33"D
Item Weight: 43 lbs

3YR

NEW
2025

RUSTIC



Q050

Three Seat Sofa
w/ Polymer Arm Accents
76"Wx35.5"Hx33"D
Item Weight: 66 lbs

3YR

WITHOUT ARM ACCENT



1L70

Arm Chair
30"Wx35.5"Hx33"D
Item Weight: 22 lbs

3YR



1L40

Two-Seat Loveseat
52.5"Wx35.5"Hx33"D
Item Weight: 39 lbs

3YR



1L50

Three Seat Sofa
75.5"Wx35.5"Hx33"D
Item Weight: 62 lbs

3YR

SECTIONAL ITEMS W/ & W/O POLYMER ACCENT

NEW
2025

RUSTIC



Q010

End/Arm Section
w/ Polymer Accent
32.25"Wx35"Hx30"D
Item Weight: 29 lbs

3YR



VL10

End/Arm Section
30"Wx35"Hx30"D
Item Weight: 26.5 lbs

3YR

TABLES & ACCESSORIES

MGP
RUSTIC



50F0

Polymer Top Attachable
Accessory Table
28.5"Wx14"Hx28.5"D
Item Weight: 26 lbs

3YR

MGP
RUSTIC



50N0

Polymer Top Attachable
Corner Table
28.5"Wx21.5"Hx28.5"D
Item Weight: 29 lbs

3YR



TCT0

Attachable Table
Connector Kit
(Set of 2 included with
50N0 & 50F0 tables)

3YR

Compatible w/ Leeward & Larssen Cushion Sectionals.
Tops Now Available in MGP & Rustic

ARMLESS SECTIONAL ITEMS & CLIPS



VL30

Armless Single Seat Section
28.5"Wx35"Hx30"D
Item Weight: 22.5 lbs

3YR



VL60

Square Corner Section
30"Wx35"Hx30"D
Item Weight: 28 lbs

3YR



VLC0

Curved Corner Section
30"Wx35"Hx30"D
Item Weight: 29 lbs

3YR



AC00

Curved Backless Corner
Section
28.5"Wx19"Hx28.5"D
Item Weight: 14 lbs

3YR



AA00

Ottoman
28.5"Wx19"Hx28.5"D
Item Weight: 16 lbs

3YR



ACT0

Sectional Furniture Clip
(set of 2 included with each
seating piece)

5YR = 5 Year Contract Warranty

3YR = 3 Year Contract Warranty

Bazza Cushion

Powder Coat Aluminum Frame • Stainless Hardware • Choice of Marine Grade Polymer (MGP) or Rustic Polymer Arms
• Available in Sunbrella® Rain & Sunbrella® Stock Book Program

NEW
FOR
2025



PARKLAND, FL

NEW
2025



3YR

Z0A0
Arm Chair
w/ Polymer Accents
28.5"Wx36"Hx34.25"D
Item Weight: 25 lbs

NEW
2025



3YR

Z0D0
Two-Seater Loveseat
w/ Polymer Accents
52.5"Wx36"Hx34.25"D
Item Weight: 46 lbs

NEW
2025



3YR

Z0F0
Three-Seater Sofa
w/ Polymer Accents
76.5"Wx36"Hx34.25"D
Item Weight: 66 lbs

NEW
2025



3YR

Z000
Ottoman
24.25"Wx19"Hx21"D
Item Weight: 11 lbs

Additional Features & Benefits Bazza Cushion

- Stationary ruggedly constructed items perfect for contract settings.
- Choose from 9 Powdercoat Frame Finishes and 12 MGP or 5 Rustic Polymer Arm Accents
- Firmer seating comfort maintains its shape longer
- Coordinating Sling Collection featured on p. 10.



Welles Cushion

Powder Coat Aluminum Frame • Choice of Marine Grade Polymer (MGP) or Rustic Polymer Arm and Leg Accent
• Available in Sunbrella® Rain & Sunbrella® Stock Book Program



PARKLAND, FL

RUSTIC



3YR

D0F0
Café Dining Chair
no Welting
24.5"Wx38.25"Hx29"D
Item Weight: 14 lbs

RUSTIC



3YR

D080
Armless Café Dining
Chair no Welting
20.5"Wx38.25"Hx28"D
Item Weight: 12 lbs

RUSTIC



3YR

D070
Arm Chair
no Welting
26"Wx38.25"Hx35.5"D
Item Weight: 20 lbs

RUSTIC



3YR

D040
Two Seat Loveseat
no Welting
48"Wx38.25"Hx35.5"D
Item Weight: 34 lbs

RUSTIC



3YR

D030
Three Seat Sofa
no Welting
70"Wx38.25"Hx35.5"D
Item Weight: 54 lbs

RUSTIC



3YR

D0T0
Ottoman no Welting
23.25"Wx18.5"Hx20.75"D
Item Weight: 8 lbs

RUSTIC



3YR

NL80
Round End Table
23"Wx19.5"Hx23"D
Item Weight: 14.5 lbs

RUSTIC



3YR

NL30
Oval Coffee Table
42"Wx19.5"Hx24"D
Item Weight: 26 lbs

Additional Features & Benefits Welles Cushion

- Polymer arm provides extra comfort and is comfortable to the touch on hot and cool days.
- Vinyl strap suspension on seat and back provides long term comfort.
- Fabric panel over frame on back provides an upholstered look.
- Arms and lower leg available in 8 Standard MGP Colors and 5 Rustic Polymer Colors.
- Welles Collection Legs in Rustic Polymer are milled down like natural wood and will have pattern variations, similar to real wood as shown to right.



Table Legs are one-color powdercoated aluminum.
Tops Now Available in MGP & Rustic.

5YR = 5 Year Contract Warranty

3YR = 3 Year Contract Warranty

Belle Isle Cushion

Powder Coat Aluminum Frame • Choice of Marine Grade Polymer (MGP) or Rustic Polymer Arms
• Available in Sunbrella® Rain & Sunbrella® Stock Book Program



3YR

B070
Arm Chair
w/ Polymer Arms
27.5"Wx38"Hx33"D
Item Weight: 20 lbs



3YR

B010
Supreme Arm Chair
w/ Polymer Arms
27.5"Wx43"Hx35.75"D
Item Weight: 22 lbs



3YR

B020
Supreme Adjustable Back Chair
w/ Polymer Arms
28.25"Wx43"Hx34.5"D
Reclined Length= 51.5"
Item Weight: 25.5 lbs



3YR

B090
Three-Seat Sofa
w/ Polymer Arms
71.5"Wx38"Hx33"D
Item Weight: 48 lbs



3YR

B000
Ottoman
25"Wx18"Hx19"D
Item Weight: 8 lbs

Additional Features & Benefits Belle Isle Cushion

- Coordinates with our Belle Isle Sling Collection featured on p.11.
- Wide polymer arm provides extra comfort and is comfortable to the touch on hot and cool days.
- Vinyl strap suspension on seat and back provides long term comfort.
- Fabric panel over frame on back provides an upholstered look.
- Supreme back heights add a level of sophistication to your design.
- **Adjustable Back Chair** can be used with the ottoman to make a two piece chaise for tighter spaces.



CUSHION FABRIC SELECTION See our full line catalog for our complete fabric selection

Fabric for Cushion Products Only... The fabrics below represent our most popular fabrics for Cushion applications but we have 140 cushion fabrics available in our full line catalog.

								
91A Canvas Henna A Grade	1A Red A Grade	93A Canvas Persimmon A Grade	196 Remix Mesa A Grade	69A Mango A Grade	41A Tangerine A Grade	43A Yellow A Grade	6A White A Grade	848 Salt B Grade
								
174 Nurture White A Grade	597 Grasscloth Cloud A Grade	658 Tabloid Cloud B Grade	774 Hither Parchment A Grade	775 Bliss Linen A Grade	783 Grasscloth Buff A Grade	44A Canvas Flax A Grade	17A Champagne A Grade	791 Grasscloth Dune A Grade
								
798 Bliss Sand A Grade	984 Blend Sand B Grade	197 Remix Camel A Grade	280 Conte Linen C Grade	293 Mainstreet Dove C Grade	199 Benson Honey B Grade	198 Mainstreet Putty C Grade	54A Stucco A Grade	8A Canvas Raffia A Grade
								
75A Wren A Grade	864 Linen Sesame A Grade	286 Kismet Teak B Grade	462 Sahara B Grade	89A Cast A Grade	40A Cast Silver A Grade	924 Huskie B Grade	785 Hither Pewter A Grade	36A Stone Linen B Grade
								
849 Dazzle B Grade	81A Greystone A Grade	694 Proven Ash B Grade	659 Lure Smoke B Grade	973 Blend Coal B Grade	90A Slate A Grade	885 Hither Char A Grade	5A Black A Grade	661 Atmosphere Mineral B Grade
								
95A Canvas Haze A Grade	251 Nurture Haze B Grade	164 Conte River C Grade	167 Nurture Indigo B Grade	963 Blend Indigo B Grade	672 Proven Denim B Grade	13A Navy A Grade	86A Indigo A Grade	591 Hither Twilight A Grade
								
35A Cobalt A Grade	66A Azure A Grade	27A True Blue A Grade	28A Pacific Blue A Grade	42A Sky A Grade	78A Mineral Blue A Grade	57A Aruba A Grade	294 Benson Lagoon B Grade	893 Bliss Dew A Grade
								
79A Peacock A Grade	24A Cast Breeze A Grade	22A Forest Green A Grade	92A Cast Ivy A Grade	2A Canvas Seasalt A Grade	187 Benson Chive B Grade	4A Canvas Macaw A Grade		

Sunbrella® RAIN

WATERPROOF PERFORMANCE FABRICS

Sunbrella® Rain Fabrics available on all Cushion and all Padded Sling Collections. (some exclusions apply)



* Symbol denotes fabric not available on Throw Pillows.

● Available only on Cushion and Padded Sling Collections.



13R Rain Navy
B Grade ● *



8R Rain Canvas
Raffia
B Grade ● *



40R Rain Cast
Silver
B Grade ● *



81R Rain Greystone
B Grade ● *



86R Rain Indigo
B Grade ● *



89R Rain Cast
B Grade ● *



90R Rain Slate
B Grade ● *

RECENT INSTALLATIONS CUSHION



THE MONTAGE, ALBANY, NY



SOAKY MOUNTAIN WATERPARK, SEVIERVILLE, TN



ROARING SPRINGS WATERPARK
MERIDIAN, ID



BAY 151 APARTMENTS, BAYONNE, NJ



ARONIMINK GOLF CLUB, NEWTOWN SQUARE, PA



H20BX WATERPARK POWELLS POINT, NC

Propane Patio Heater

Powder Coat Aluminum and Marine Grade Polymer Frame • 46,000 BTU Heater



7F50
Propane Patio Heater
32"Wx32"Dx90"H
Weight: 55 lbs

3YR



AVAILABLE ADD-ON ITEMS



3YR

7F10
Add-on weights for
Propane Patio Heater
(set of 2)
Combined Weight of 2=10 lbs



3YR

7F00
Lower Estate Pole
(for using Umbrella
with Patio Heater)



3YR

7FG0
Balcony Height Table Top
Adapter for 7F50 Patio
Heater



3YR

7FH0
Bar Height Table Top
Adapter for 7F50 Patio
Heater

Additional Features & Benefits Propane Patio Heater

- Electronic Ignition - 46,000 BTU
- Holds a common 20lb propane tank (not included).
- Match your Propane Patio Heater with your existing table and chairs!
- **7F50 Propane Patio Heater** can be used Free-standing or under any of our Dining, Balcony or Bar tables with 4-corner legs.
- Evenly distribute the heat to each guest around the table!
- **7F50 Propane Patio Heater** can hold up to (3) sets of add-on weights for free-standing applications.



PROPANE PATIO HEATER 4 UNIQUE APPLICATIONS

FREE-STANDING

The 7F50 Propane Patio Heater is designed as a Free-Standing item. For windy regions, up to 3 sets of Add-on weights can be installed for extra stability. See p. 43 for details.

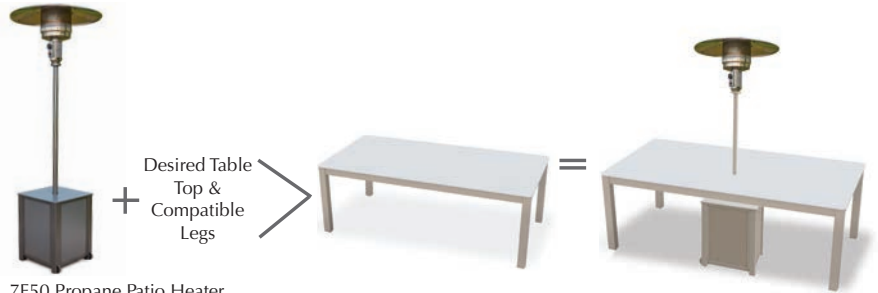


7F50 Propane Patio Heater

UNDER EXISTING TABLES

(Compatible on table designs with 4-corner legs)

The 7F50 Propane Patio Heater can be used under several of our Dining, Balcony and Bar Height Tables. The vertical pole was designed at the perfect diameter to be used in any table with a standard umbrella hole. The Patio Heater can be used under any Telescope table listed below.



7F50 Propane Patio Heater

DINING HEIGHT LEGS

- 3850LEG
- 2M00LEG
- 5M00LEG
- 5ML0LEG
- 5290 42" x 120" Ext. Table

BALCONY HEIGHT LEGS

- 38100LG
- 3M00LEG
- 6M00LEG
- 6ML0LEG

BAR HEIGHT LEGS

- 38000LG
- 4M00LEG
- 7M00LEG
- 7ML0LEG

SUNNY-DAY COMPATIBLE!

The 7F50 Propane Patio Heater can be converted to an umbrella base during the day by utilizing the 7F00 Lower Estate Pole and a Commercial Market Umbrella!



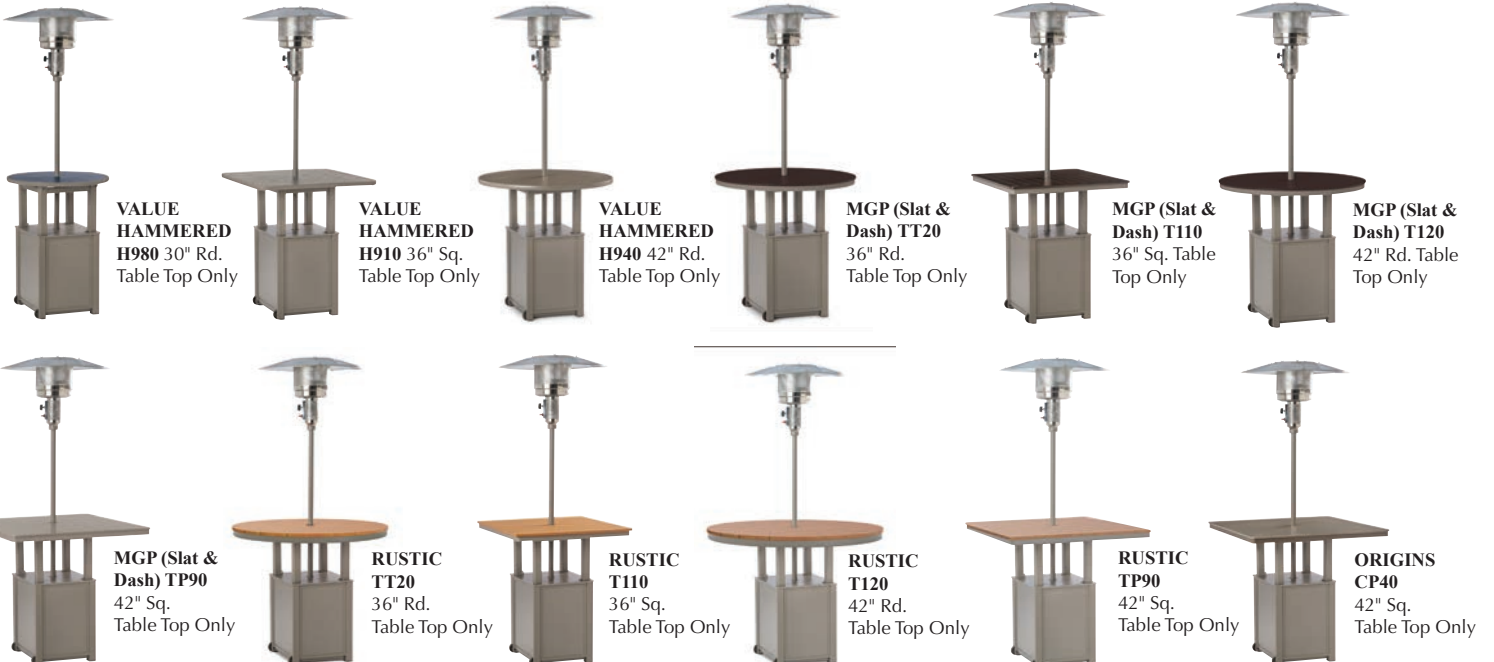
7F50 Propane Patio Heater

USE AS TABLE BASE

Featuring, Balcony and Bar Height Table Top Adapters for the 7F50 Patio Heater. The adapter allows your Patio Heater base to double as a table base on smaller scale Balcony & Bar Tables! The Diagram shows how to create the balcony and bar combinations shown below.



7F50 Propane Patio Heater



FIRE TABLE SELECTION

MGP SLAT TOP FIRE TABLES & ACCESSORIES

Accent MGP colors available only on top surface of Fire Tables (sides will be same color as powdercoat frame except White frames will have Snow MGP side panels). Standard and Accent MGP Top options shown below. Electronic Ignition, 55,000 BTU (3F10 rectangle), 60,000 BTU (Round), 100,500 BTU (6F40 Rectangle), Propane or Natural Gas, includes Clear Crystal Fire Gems.

EASY ACCESS DRAWER DESIGN



3F40
42" Rd. MGP Top
Fire Table
42"Wx42"Dx23"H
Weight: 95 lbs

3YR



Center Cover
Included



4F00-GLS
25" Round Tempered
Glass Surround for
42" & 54" Fire Tables



3F10
36" x 54" Rect. MGP Top
Fire Table
36"Wx54"Dx23"H
Weight: 102 lbs

3YR



Center Cover
Included



4F10-GLS
16" x 32" Tempered
Glass Surround for
36" x 54" Fire Table

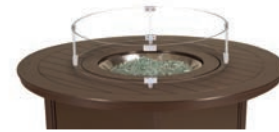


3F70
54" Rd. MGP Top
Fire Table
54"Wx54"Dx23"H
Weight: 100 lbs

3YR



Center Cover
Included



4F00-GLS
25" Round Tempered
Glass Surround for
42" & 54" Fire Tables

AVAILABLE LIFT KITS for 3F10, 3F40, 3F70, CF40 & CF30



2F60
Dining Height Lift Kit
27.25"Wx27.25"Dx5"H
Combined Height: 28"
Weight: 5 lbs



2F50
Balcony Height Lift Kit
27.25"Wx27.25"Dx13"H
Combined Height: 36"
Weight: 7 lbs



2F00
Bar Height Lift Kit
27.25"Wx27.25"Dx17"H
Combined Height: 40"
Weight: 8.5 lbs



6F40
48" x 84" Rect. MGP
Top Fire Table
47.5"Wx85.25"Dx23"H
Weight: 172 lbs

3YR



Center Cover
Included



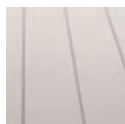
6F20-GLS
16" x 44" Rect.
Tempered Glass
Surround for 48" x 84"
Fire Tables

AVAILABLE LIFT KITS for 6F40



6F60
Dining Height Lift Kit
48"Wx27.25"Dx5"H
Combined Height: 28"
Weight: 6 lbs

STANDARD MARINE GRADE POLYMER SLAT TOP OPTIONS



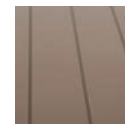
P5S Snow



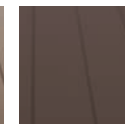
PYS Warm Grey



P6S Desert



P4S Beachwood



P1S Kona



PFS Storm



P3S Classic
Graphite



P7S Black

ACCENT MARINE GRADE POLYMER SLAT TOP OPTIONS



Items notated with Color
Symbol are available with
Accent MGP Top options.



PCS Cranberry



PHS Hunter



PQS Aqua



PNS Navy

5YR = 5 Year Contract Warranty

3YR = 3 Year Contract Warranty

FIRE TABLE SELECTION

RUSTIC POLYMER TOP FIRE TABLES & ACCESSORIES

Rustic Polymer colors available only on top surface of Fire Tables (sides will be same color as powdercoat frame except White frames will have Snow MGP side panels). Electronic Ignition, 55,000 BTU (3F10 rectangle), 60,000 BTU (Round), 100,500 BTU (6F40 Rectangle), Propane or Natural Gas, includes Clear Crystal Fire Gems.

EASY ACCESS DRAWER DESIGN

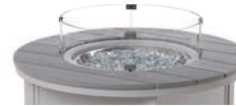


3F40
42" Rd. Rustic
Polymer Top Fire Table
42"Wx42"Dx23"H
Weight: 97 lbs

3YR



Center Cover
Included



4F00-GLS
25" Round Tempered
Glass Surround for 42"
& 54" Fire Tables



3F10
36" x 54" Rect. Rustic
Polymer Top Fire Table
36"Wx54"Dx23"H
Weight: 105 lbs

3YR



Center Cover
Included



4F10-GLS
16" x 32" Tempered
Glass Surround
for 36" x 54" Fire Table

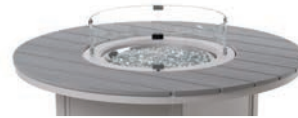


3F70
54" Rd. Rustic Polymer
Top Fire Table
54"Wx54"Dx23"H
Weight: 123 lbs

3YR



Center Cover
Included



4F00-GLS
25" Round Tempered
Glass Surround
for 42" & 54" Fire Tables

AVAILABLE LIFT KITS for 3F10, 3F40, 3F70, CF40 & CF30



2F60
Dining Height Lift Kit
27.25"Wx27.25"Dx5"H
Combined Height: 28"
Weight: 5 lbs



2F50
Balcony Height Lift Kit
27.25"Wx27.25"Dx13"H
Combined Height: 36"
Weight: 7 lbs



2F00
Bar Height Lift Kit
27.25"Wx27.25"Dx17"H
Combined Height: 40"
Weight: 8.5 lbs



6F40
48" x 84" Rect. Rustic
Polymer Top Fire Table
47.5"Wx85.25"Dx23.25"H
Weight: 186 lbs

3YR



Center Cover
Included



6F20-GLS
16" x 44" Rect.
Tempered Glass
Surround for 48" x 84"
Fire Tables

AVAILABLE LIFT KITS for 6F40



6F60
Dining Height Lift Kit
48"Wx27.25"Dx5"H
Combined Height: 28"
Weight: 6 lbs

RUSTIC POLYMER TOP OPTIONS



Items notated with Rustic
Symbol are available with
Rustic Polymer Top options.



RG0 Cape Grey



RX0 Boardwalk



RU0 Chestnut



RT0 Teak



RL0 Laguna

FIRE TABLE SELECTION

ORIGINS TOP FIRE TABLE & ACCESSORIES

MGP sides will be same color as powdercoat frame except White frames will have Snow MGP side panels. Electronic Ignition, 55,000 BTU (rectangle), 60,000 BTU (Round), Propane or Natural Gas, includes Clear Crystal Fire Gems.



CF40
36" x 54" Rect. Origins
Top Fire Table
36"Wx54"Dx23"H
Weight: 134 lbs
Center Cover Included

3YR



CF30
54" Rd. Origins Top Fire Table
54"Wx54"Dx23"H
Weight: 148 lbs
Center Cover Included

3YR

EASY ACCESS DRAWER DESIGN



4F10-GLS
16" x 32" Tempered Glass
Surround for 36" x 54" Fire Table



4F00-GLS
25" Round Tempered Glass
Surround for 42" & 54" Fire Tables

AVAILABLE LIFT KITS for 3F10, 3F40, 3F70, CF40 & CF30



2F60
Dining Height Lift Kit
27.25"Wx27.25"Dx5"H
Combined Height: 28"
Weight: 5 lbs

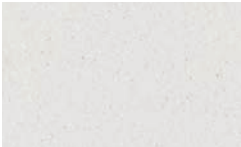


2F50
Balcony Height Lift Kit
27.25"Wx27.25"Dx13"H
Combined Height: 36"
Weight: 7 lbs

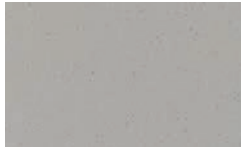


2F00
Bar Height Lift Kit
27.25"Wx27.25"Dx17"H
Combined Height: 40"
Weight: 8.5 lbs

ORIGINS FIRE TABLE TOP OPTIONS



A33 Nordic



A31 New Concrete



A32 Palermo

Trash/Towel Receptacle

Marine Grade Polymer (MGP)/ Powdercoated Aluminum Frame • Stainless Steel Hardware



Accent MGP colors available only on the two horizontal surfaces of the Trash/Towel Receptacle (sides will be same color as powdercoat frame except Textured White frames will have Snow MGP side panels). Rustic Polymer colors not available on Trash/Towel Receptacle.



3T00
Trash/Towel Receptacle
27.5"Wx20.5"Dx40"H
Item Weight: 64 lbs

5YR



30 Gallon Plastic Bin and set of 3
adhesive placards included.

TRASH ONLY
TOWELS ONLY
RECYCLE ONLY



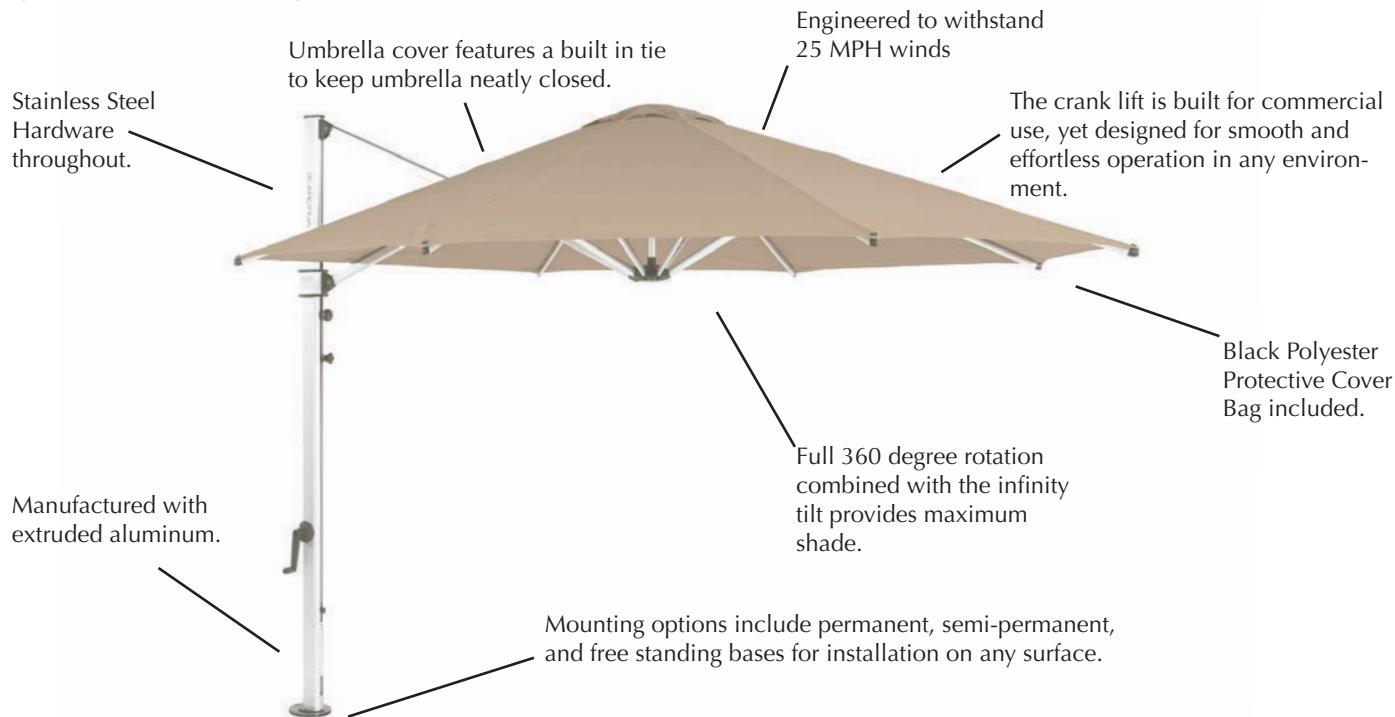
5YR = 5 Year Contract Warranty

3YR = 3 Year Contract Warranty

FEATURES & BENEFITS UMBRELLAS

UMBRELLAS ON PP. 48-50

CANTILEVER UMBRELLA



CANTILEVER FRAME COLOR



Matte Silver

CANTILEVER COVER FABRIC OPTIONS

(Cantilever Umbrella only available in the fabrics shown below.)



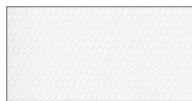
13F Navy
Grade: B
Coordinating Cushion
Fabric: 13A Navy



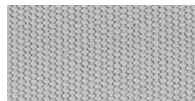
66F Capri
Grade: B
Coordinating Cushion
Fabric: 66A Azure



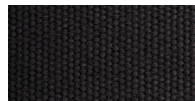
17F Linen
Grade: B
Coordinating Cushion
Fabric: 17A Champagne



6F White
Grade: B
Coordinating Cushion
Fabric: 6A White



99F Cadet Gray
Grade: B



5F Black
Grade: B
Coordinating Cushion
Fabric: 5A Black

COMMERCIAL MARKET UMBRELLAS



Simple yet effective, our unique and patented (US 8,230,869 / 8,302,616) mechanisms allow you to raise and lower your umbrella by simply pulling on the ribs or pushing on the fabric. This design is especially helpful with the use of larger dining tables where access to the umbrella crank is limited. It also adds to the durability and aesthetics of the umbrella.

Cantilever Umbrella

Aluminum Frame • Stainless Steel Hardware • Fabrics limited to six acrylic fabrics shown on opposite page



MOUNT LAUREL, NJ



CAUM
11' Cantilever Umbrella
Weight: 95 lbs

3YR



CAMP
Deck Mounting Plate



3YR

CABA
33" x 34" Square Galvanized Steel Base w/
Wheels
Weight: 94 lbs (before pavers installed)

***NOTE: (12) 16"x16" x 2" Pavers re-
quired, not included. Base holds 3 pavers
or 105lbs minimum per quadrant)**



CAGM
In-Ground Mount

***Must be installed by
Professional installer**

5YR = 5 Year Contract Warranty

3YR = 3 Year Contract Warranty

Commercial Market Umbrella Collection

Aluminum Frame • Patented Mechanism • Available in Sunbrella® Stock Book Program



SOAKY MOUNTAIN WATERPARK,
SEVIERVILLE, TN



3YR

670 7 1/2' Commercial Market Umbrella
Item Weight: 13 lbs

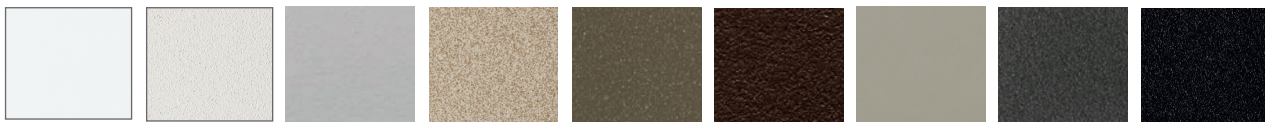


3YR

600 9' Commercial Market Umbrella
Item Weight: 14 lbs

Important: All umbrellas must be securely fastened to an appropriate base and closed and tied securely during heavy winds

COMMERCIAL MARKET UMBRELLA TEXTURED POWDERCOAT FRAME COLOR OPTIONS



White

Snow

Warm Grey

Desert

Beachwood

Kona

Storm

Graphite

Black

Umbrella Base Selection (For Commercial Market Umbrellas Only)



3YR

#12 24" Square Steel Market Base
Item Weight: 55 lbs.
24" square, 5/16" thick
Overall Height: 10.5"

#W White #T Graphite
#6 Snow #D Desert
#8 Black #F Storm
#Y Warm Grey #J Beachwood
#K Kona

Free-standing and under table use



1YR

#38 21" Round Weighted Base w/ Wheels
Item Weight: 80 lbs.
21" Diameter
Overall Height: 14.5"

#W White (coordinates with White, Snow & Warm Grey)
#8 Black
#T Graphite (coordinates with Storm and Graphite)
#Z Bronze (coordinates with Kona, Beachwood & Desert).

Free-Standing & under table use (excluding tables using 2280 Legs)



1YR

#13 16" Weighted Base w/ Handle
Item Weight: 45 lbs.
16" Diameter
Overall Height: 6"

#W White (coordinates with White, Snow & Warm Grey)
#8 Black
#0TT Graphite (coordinates with Storm and Graphite)
#Z Bronze (coordinates with Kona, Beachwood & Desert).

Under table use only



1YR

#37 24" Round Weighted Base w/ Wheels
Item Weight: 120 lbs.
24" Diameter
Overall Height: 20.25"

#W White (coordinates with White, Snow & Warm Grey)
#8 Black
#T Graphite (coordinates with Storm and Graphite)
#Z Bronze (coordinates with Kona, Beachwood & Desert).

Free-Standing use only

Furniture Accessories



PCMS
23.5" x 75" Universal Chaise Pad



HDPL
10.5" x 23" Attachable Pillow

Our HDPL can be used as a head pillow on our chaises and chairs, it also functions as a lumbar pillow. The elastic strap makes sure the pillow stays in place.



LPLW
12" x 24" Lumbar Pillow



HPLW
17" Throw Pillow



TPLW
20" Throw Pillow



1ABP
21" x 6" Bolster Pillow



ADA0-PLG
Tall legs plugs to raise overall table height for ADA-compliance on select Tables. See table pages. (Set of 4)



5YR

For extra windy locations we offer a 10 lb Weighted Add-On Bar for Sling and Strap Collections.



SPRDBR3
Spreader Bar Tool for replacing slings



ANC0
Bench Anchor Kit (Set of 4)



SLGSTR01
Sling Starter Tools for Replacing Slings (set of 3)
See price index for details

5YR = 5 Year Contract Warranty

3YR = 3 Year Contract Warranty

Table Selection

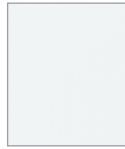
OBSCURE ACRYLIC ACCESSORY TABLES



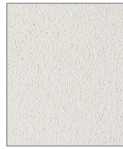
200ACR...17" Sq.
End Table
Overall Height: 18"

3YR

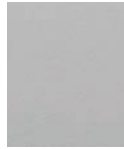
TEXTURED POWDERCOAT FRAME COLOR OPTIONS



White



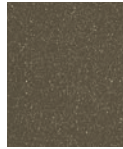
Snow



Warm Grey



Desert



Beachwood



Kona



Storm



Graphite



Black



VALUE HAMMERED MARINE GRADE POLYMER TOP TABLES

Dining, Balcony & Bar Heights. All dining, balcony and bar tables feature umbrella holes. Heights listed below represent the overall height. Mix and match table top and leg color combinations. See available MGP colors on opposite page.



TOP ONLY

- **H980...** 30" Rd. Table Top Only

3YR

Legs Only

- **2W20LEG...** Dining Height Legs only, 28.5"H
- **3W20LEG...** Balcony Height Legs only, 36.5"H
- **4W20LEG...** Bar Height Legs only, 40.5"H



TOP ONLY

- **H980...** 30" Rd. Table Top Only

3YR

PEDESTAL BASE ONLY

- **2X20BAS...** Dining Height Base only, 28.5"H
- **3X20BAS...** Balcony Height Base only, 36.5"H
- **4X20BAS...** Bar Height Base only, 40.5"H



TOP ONLY

- **H980...** 30" Rd. Table Top Only

3YR

80LB WEIGHTED PEDESTAL BASE ONLY

- **2P20BAS...** Dining Height Base only, 28.5"H
- **3P20BAS...** Balcony Height Base only, 36.5"H
- **4P20BAS...** Bar Height Base only, 40.5"H



TOP ONLY

- **H910...** 36" Sq. Table Top Only

3YR

Legs Only

- **2W50LEG...** Dining Height Legs only, 28.5"H
- **3W50LEG...** Balcony Height Legs only, 36.5"H
- **4W50LEG...** Bar Height Legs only, 40.5"H



TOP ONLY

- **H910...** 36" Sq. Table Top Only

3YR

PEDESTAL BASE ONLY

- **2X20BAS...** Dining Height Base only, 28.5"H
- **3X20BAS...** Balcony Height Base only, 36.5"H
- **4X20BAS...** Bar Height Base only, 40.5"H



TOP ONLY

- **H910...** 36" Sq. Table Top Only

3YR

80LB WEIGHTED PEDESTAL BASE ONLY

- **2P20BAS...** Dining Height Base only, 28.5"H
- **3P20BAS...** Balcony Height Base only, 36.5"H
- **4P20BAS...** Bar Height Base only, 40.5"H



TOP ONLY

- **H940...** 42" Rd. Table Top Only

3YR

LEGS ONLY

- **2W50LEG...** Dining Height Legs only, 28.5"H
- **3W50LEG...** Balcony Height Legs only, 36.5"H
- **4W50LEG...** Bar Height Legs only, 40.5"H



TOP ONLY

- **H940...** 42" Rd. Table Top Only

3YR

PEDESTAL BASE ONLY

- **2X20BAS...** Dining Height Base only, 28.5"H
- **3X20BAS...** Balcony Height Base only, 36.5"H
- **4X20BAS...** Bar Height Base only, 40.5"H



TOP ONLY

- **H940...** 42" Rd. Table Top Only

3YR

80LB WEIGHTED PEDESTAL BASE ONLY

- **2P20BAS...** Dining Height Base only, 28.5"H
- **3P20BAS...** Balcony Height Base only, 36.5"H
- **4P20BAS...** Bar Height Base only, 40.5"H



DINING TABLE

- **49B0...** 48" Rd. Dining Height Table

3YR



TOP ONLY

- **H990...** 48" Rd. Table Top Only

3YR

PEDESTAL BASE ONLY

- **2X20BAS...** Dining Height Base only, 28.5"H
- **3X20BAS...** Balcony Height Base only, 36.5"H
- **4X20BAS...** Bar Height Base only, 40.5"H



TOP ONLY

- **H990...** 48" Rd. Table Top Only

3YR

120LB WEIGHTED PEDESTAL BASE ONLY

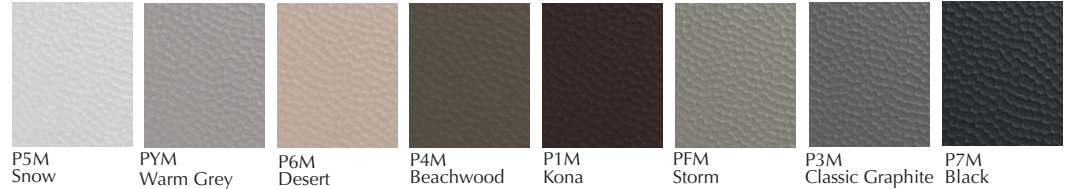
- **2P50BAS...** Dining Height Base only, 29"H
- **3P50BAS...** Balcony Height Base only, 37"H
- **4P50BAS...** Bar Height Base only, 41"H



Dining Table
• H9D0... 42" x 84" Oval
Dining Height Table

3YR

HAMMERED MARINE GRADE POLYMER TOP OPTIONS



MARINE GRADE POLYMER TOP TABLES - SLAT

Accessory, Coffee, Dining, Balcony & Bar Heights. All coffee, dining, balcony and bar tables feature umbrella holes unless otherwise noted. End tables have no holes. Heights listed below represent the overall height. Mix and match table top and leg color combinations. Accent MGP colors available on items marked below. See available colors on p. 55. MGP Top Fire Tables shown on p. 45.



3YR

200...17" Square
End Table
Overall Height: 18"
(smooth top only)



3YR

6M90...17.5" Square
Side Table
Overall Height: 24.25"
(smooth top only)



3YR

5100...18" Square
End Table
Overall Height: 19.5"
(smooth top only)



3YR

18N0...18" Round
End Table
Overall Height: 18.5"
(smooth top only)



3YR

5210...10"x27" Rect.
Chaise Table
Overall Height: 19.5"



3YR

5140...21" Round
End Table
Overall Height: 19.5"



3YR

5000...21" Square
End Table
Overall Height: 19.5"



3YR

5W80...23" Round
End Table
Overall Height: 19.75"
(smooth top only)



3YR

NL80...23" Round
End Table
Overall Height: 19.5"
(smooth top only)



3YR

50F0... 28.5"x28.5" Square
Attachable Accessory Table, no
hole (Compatible with Leeward
& Larssen Cushion Sectionals)
Overall Height: 14"



3YR

50N0... 28.5"x28.5" Square
Attachable Corner Table, no hole
(Compatible with Leeward &
Larssen Cushion Sectionals)
Overall Height: 21.5"



3YR

50W0...21" x 42" Rect.
Coffee Table, no hole
Overall Height: 18"



3YR

5W90...24" x 42" Oval
Coffee Table, no hole
Overall Height: 19.75"
(smooth top only)



3YR

NL30...24" x 42" Oval
Coffee Table, no hole
Overall Height: 19.5"
(smooth top only)



3YR

50Q0...24" x 48" Rect.
Coffee Table, no hole
Overall Height: 18"



TOP ONLY

• T300...18" x 54" Rect. Table Top Only

3YR

PARSONS LEGS ONLY

- 5M00LEG... Dining Height Legs only, 29"H
- 6M00LEG... Balcony Height Legs only, 37"H
- 7M00LEG... Bar Height Legs only, 41"H

5YR = 5 Year Contract Warranty

3YR = 3 Year Contract Warranty



TOP ONLY **NEW!**
• **TT20...36"** Round Table Top Only

3YR



TOP ONLY **NEW!**
• **TT20...36"** Round Table Top Only

3YR

80LB WEIGHTED PEDESTAL BASE ONLY
• **2P20BAS...** Dining Height Base only, 28.5"H
• **3P20BAS...** Balcony Height Base only, 36.5"H
• **4P20BAS...** Bar Height Base only, 40.5"H



TOP ONLY **NEW!**
• **TT20...36"** Round Table Top Only

3YR

PEDESTAL BASE ONLY
• **2X20BAS...** Dining Height Base only, 28.5"H
• **3X20BAS...** Balcony Height Base only, 36.5"H
• **4X20BAS...** Bar Height Base only, 40.5"H



TOP ONLY
• **T110...36"** Square Table Top Only

3YR



TOP ONLY
• **T110...36"** Square Table Top Only

3YR

80LB WEIGHTED PEDESTAL BASE ONLY
• **2P20BAS...** Dining Height Base only, 28.5"H
• **3P20BAS...** Balcony Height Base only, 36.5"H
• **4P20BAS...** Bar Height Base only, 40.5"H



TOP ONLY
• **T110...36"** Square Table Top Only

3YR



TOP ONLY
• **TT10...36"** Square Table Top Only

3YR

PARSONS LEGS ONLY
• **8M00LEG...** Coffee Height Legs only, 18"H
• **5M00LEG...** Dining Height Legs only, 29"H
• **6M00LEG...** Balcony Height Legs only, 37"H
• **7M00LEG...** Bar Height Legs only, 41"H



TOP ONLY
• **T120...42"** Round Table Top Only

3YR



TOP ONLY
• **T120...42"** Round Table Top Only

3YR

80LB WEIGHTED PEDESTAL BASE ONLY
• **2P20BAS...** Dining Height Base only, 28.5"H
• **3P20BAS...** Balcony Height Base only, 36.5"H
• **4P20BAS...** Bar Height Base only, 40.5"H



TOP ONLY
• **T120...42"** Round Table Top Only

3YR



TOP ONLY
• **T320...42"** Round Table Top Only

3YR

PARSONS LEGS ONLY
• **8M00LEG...** Coffee Height Legs only, 19"H
• **5M00LEG...** Dining Height Legs only, 30"H
• **6M00LEG...** Balcony Height Legs only, 37.5"H
• **7M00LEG...** Bar Height Legs only, 41"H




TOP ONLY
• **T090...42"** Square Table Top Only

3YR



TOP ONLY
• **TP90...42"** Square Table Top Only

3YR

LEGS ONLY 
• **3730LEG...** Coffee Height Legs only, 18"H
• **3850LEG...** Dining Height Legs only, 29"H
• **38100LG...** Balcony Height Legs only, 37"H
• **38000LG...** Bar Height Legs only, 41"H

80LB WEIGHTED PEDESTAL BASE ONLY
• **2P20BAS...** Dining Height Base only, 28.5"H
• **3P20BAS...** Balcony Height Base only, 36.5"H
• **4P20BAS...** Bar Height Base only, 40.5"H



TOP ONLY
• **TP90...42"** Square Table Top Only

3YR

PEDESTAL BASE ONLY
• **2X20BAS...** Dining Height Base only, 28.5"H
• **3X20BAS...** Balcony Height Base only, 36.5"H
• **4X20BAS...** Bar Height Base only, 40.5"H



TOP ONLY
• **TM80... 48"** Round Table Top Only

3YR

LEGS ONLY
• **2280LEG...** Dining Height Legs only, 28"H



TOP ONLY
• **TM80... 48"** Round Table Top Only

3YR

120LB WEIGHTED PEDESTAL BASE ONLY
• **2P50BAS...** Dining Height Base only, 29"H
• **3P50BAS...** Balcony Height Base only, 37"H
• **4P50BAS...** Bar Height Base only, 41"H



TOP ONLY
• **TM80... 48"** Round Table Top Only

3YR

PEDESTAL BASE ONLY
• **2X20BAS...** Dining Height Base only, 28.5"H
• **3X20BAS...** Balcony Height Base only, 36.5"H
• **4X20BAS...** Bar Height Base only, 40.5"H



TOP ONLY
• **T020**... 54" Round Table Top Only

3YR

LEGS ONLY

- **3730LEG**... Coffee Height Legs only, 18"H
- **3850LEG**... Dining Height Legs only, 29"H
- **38100LG**... Balcony Height Legs only, 37"H
- **38000LG**... Bar Height Legs only, 41"H



TOP ONLY
• **TP20**... 54" Round Table Top Only

3YR

- 120LB WEIGHTED PEDESTAL BASE ONLY
- **2P50BAS**... Dining Height Base only, 29"H
 - **3P50BAS**... Balcony Height Base only, 37"H
 - **4P50BAS**... Bar Height Base only, 41"H



• **1P80**... 32" x 64" Rect. Top Picnic Table

Overall Height: 29"
Overall Footprint: 64" x 66"

5YR



TOP ONLY
• **TM30**... 36" x 64" Rect. Top Table

3YR

PARSONS LEGS ONLY

- **8M00LEG**... Coffee Height Legs only, 18"H
- **5M00LEG**... Dining Height Legs only, 29"H
- **6M00LEG**... Balcony Height Legs only, 37"H
- **7M00LEG**... Bar Height Legs only, 41"H



TOP ONLY
• **TM00**... 62" Hexagonal Table Top Only

3YR

LEGS ONLY

- **2M00LEG**... Dining Height Legs only, 28"H
- **3M00LEG**... Balcony Height Legs only, 36"H
- **4M00LEG**... Bar Height Legs only, 40"H



TOP ONLY
• **TM40**... 64" Round Table Top Only

3YR

LEGS ONLY

- **2M00LEG**... Dining Height Legs only, 28.5"H
- **3M00LEG**... Balcony Height Legs only, 36.5"H
- **4M00LEG**... Bar Height Legs only, 40.5"H



TOP ONLY
• **T160**... 64" Square Table Top Only

3YR

LEGS ONLY

- **3850LEG**... Dining Height Legs only, 29"H
- **38100LG**... Balcony Height Legs only, 37"H
- **38000LG**... Bar Height Legs only, 41"H



TOP ONLY **NEW!**
• **TM80**... 42"x84" Rect. Table Top Only

3YR

PARSONS LEGS ONLY

- **5ML0LEG**... Dining Height Legs only, 29"H
- **6ML0LEG**... Balcony Height Legs only, 37"H
- **7ML0LEG**... Bar Height Legs only, 41"H



TOP ONLY
• **TMK0**... 48" x 96" Rect. Table Top Only

3YR

PARSONS LEGS ONLY

- **5ML0LEG**... Dining Height Legs only, 29"H
- **6ML0LEG**... Balcony Height Legs only, 37"H
- **7ML0LEG**... Bar Height Legs only, 41"H



• **5290** 42"x120" Extension Table
(Slat top only)

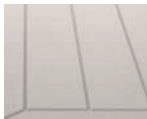
Overall Height: 29.25"

3YR



42"x88" overall when not extended
Two drop-in leaves included | Leaves store under each end

STANDARD MARINE GRADE POLYMER SLAT TOP OPTIONS



P5S Snow



PYS Warm Grey



P6S Desert



P4S Beachwood



P1S Kona



PFS Storm



P3S Classic
Graphite



P7S Black

ACCENT MARINE GRADE POLYMER SLAT TOP OPTIONS



Items notated with Color
Symbol are available with
Accent MGP Top options.



PCS Cranberry



PHS Hunter



PQS Aqua



PNS Navy



Symbol notates Dining table can be made ADA-Compliant using ADA0-PLG plugs shown on p.51

5YR = 5 Year Contract Warranty

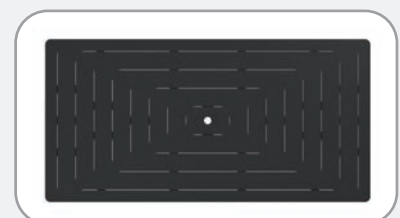
3YR = 3 Year Contract Warranty



Square Top Dash Pattern



Round Top Dash Pattern



Rectangular Top Dash Pattern

MARINE GRADE POLYMER TOP TABLES - DASH

Accessory, Coffee, Dining, Balcony & Bar Heights. All coffee, dining, balcony and bar tables feature umbrella holes unless otherwise noted. End tables have no holes. Heights listed below represent the overall height. Mix and match table top and leg color combinations. Accent MGP colors available on items marked below. See available colors on p. 58.



3YR

200...17" Square End Table
Overall Height: 18"
(smooth top only)



3YR

6M90...17.5" Square Side Table
Overall Height: 24.25"
(smooth top only)



3YR

5100...18" Square End Table
Overall Height: 19.5"
(smooth top only)



3YR

18N0...18" Round End Table
Overall Height: 18.5"
(smooth top only)



NEW 2025



3YR

5210...10"x27" Rect. Chaise Table
Overall Height: 19.5"



3YR

5000...21" Square End Table
Overall Height: 19.5"



3YR

5W80...23" Round End Table
Overall Height: 19.75"
(smooth top only)



3YR

NL80...23" Round End Table
Overall Height: 19.5"
(smooth top only)



3YR

50W0...21" x 42" Rect. Coffee Table, no hole
Overall Height: 18"



3YR

5W90...24" x 42" Oval Coffee Table, no hole
Overall Height: 19.75"
(smooth top only)



3YR

NL30...24" x 42" Oval Coffee Table, no hole
Overall Height: 19.5"
(smooth top only)



3YR

50Q0...24" x 48" Rect. Coffee Table, no hole
Overall Height: 18"



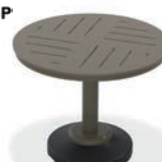
TOP ONLY **NEW!**

• **TT20...** 36" Round Table Top Only

LEGS ONLY

• **2W50LEG...** Dining Height Legs only, 28.5"H
• **3W50LEG...** Balcony Height Legs only, 36.5"H
• **4W50LEG...** Bar Height Legs only, 40.5"H

3YR



TOP ONLY **NEW!**

• **TT20...** 36" Round Table Top Only

80LB WEIGHTED PEDESTAL BASE ONLY

• **2P20BAS...** Dining Height Base only, 28.5"H
• **3P20BAS...** Balcony Height Base only, 36.5"H
• **4P20BAS...** Bar Height Base only, 40.5"H

3YR



TOP ONLY **NEW!**

• **TT20...** 36" Round Table Top Only

PEDESTAL BASE ONLY

• **2X20BAS...** Dining Height Base only, 28.5"H
• **3X20BAS...** Balcony Height Base only, 36.5"H
• **4X20BAS...** Bar Height Base only, 40.5"H

3YR



- TOP ONLY**
 • **T110...36"** Square Table Top Only
- LEGS ONLY**
 • **2W50LEG...** Dining Height Legs only, 28.5"H
 • **3W50LEG...** Balcony Height Legs only, 36.5"H
 • **4W50LEG...** Bar Height Legs only, 40.5"H

3YR



- TOP ONLY**
 • **T110...36"** Square Table Top Only
- 80LB WEIGHTED PEDESTAL BASE ONLY**
 • **2P20BAS...** Dining Height Base only, 28.5"H
 • **3P20BAS...** Balcony Height Base only, 36.5"H
 • **4P20BAS...** Bar Height Base only, 40.5"H

3YR



- TOP ONLY**
 • **T110...36"** Square Table Top Only
- PEDESTAL BASE ONLY**
 • **2X20BAS...** Dining Height Base only, 28.5"H
 • **3X20BAS...** Balcony Height Base only, 36.5"H
 • **4X20BAS...** Bar Height Base only, 40.5"H

3YR



- TOP ONLY**
 • **T110...36"** Square Table Top Only
- PARSONS LEGS ONLY**
 • **8M00LEG...** Coffee Height Legs only, 18"H
 • **5M00LEG...** Dining Height Legs only, 29"H
 • **6M00LEG...** Balcony Height Legs only, 37"H
 • **7M00LEG...** Bar Height Legs only, 41"H

3YR



- TOP ONLY**
 • **T120...42"** Round Table Top Only
- LEGS ONLY**
 • **2W50LEG...** Dining Height Legs only, 28.5"H
 • **3W50LEG...** Balcony Height Legs only, 36.5"H
 • **4W50LEG...** Bar Height Legs only, 40.5"H

3YR



- TOP ONLY**
 • **T120...42"** Round Table Top Only
- 80LB WEIGHTED PEDESTAL BASE ONLY**
 • **2P20BAS...** Dining Height Base only, 28.5"H
 • **3P20BAS...** Balcony Height Base only, 36.5"H
 • **4P20BAS...** Bar Height Base only, 40.5"H

3YR



- TOP ONLY**
 • **T120...42"** Round Table Top Only
- PEDESTAL BASE ONLY**
 • **2X20BAS...** Dining Height Base only, 28.5"H
 • **3X20BAS...** Balcony Height Base only, 36.5"H
 • **4X20BAS...** Bar Height Base only, 40.5"H

3YR



- TOP ONLY**
 • **T320...42"** Round Table Top Only
- PARSONS LEGS ONLY**
 • **8M00LEG...** Coffee Height Legs only, 19"H
 • **5M00LEG...** Dining Height Legs only, 30"H
 • **6M00LEG...** Balcony Height Legs only, 37.5"H
 • **7M00LEG...** Bar Height Legs only, 41"H

3YR



- TOP ONLY**
 • **TP90...42"** Square Table Top Only
- PEDESTAL BASE ONLY**
 • **2X20BAS...** Dining Height Base only, 28.5"H
 • **3X20BAS...** Balcony Height Base only, 36.5"H
 • **4X20BAS...** Bar Height Base only, 40.5"H

3YR



- TOP ONLY**
 • **T090...42"** Square Table Top Only
- LEGS ONLY**
 • **3730LEG...** Coffee Height Legs only, 18"H
 • **3850LEG...** Dining Height Legs only, 29"H
 • **38100LG...** Balcony Height Legs only, 37"H
 • **38000LG...** Bar Height Legs only, 41"H

3YR



- TOP ONLY**
 • **TP90...42"** Square Table Top Only
- 80LB WEIGHTED PEDESTAL BASE ONLY**
 • **2P20BAS...** Dining Height Base only, 28.5"H
 • **3P20BAS...** Balcony Height Base only, 36.5"H
 • **4P20BAS...** Bar Height Base only, 40.5"H

3YR



- TOP ONLY**
 • **TM80... 48"** Round Table Top Only
- LEGS ONLY**
 • **2280LEG...** Dining Height Legs only, 28"H

3YR



- TOP ONLY**
 • **TM80... 48"** Round Table Top Only
- 120LB WEIGHTED PEDESTAL BASE ONLY**
 • **2P50BAS...** Dining Height Base only, 29"H
 • **3P50BAS...** Balcony Height Base only, 37"H
 • **4P50BAS...** Bar Height Base only, 41"H

3YR



- TOP ONLY**
 • **TM80... 48"** Round Table Top Only
- PEDESTAL BASE ONLY**
 • **2X20BAS...** Dining Height Base only, 28.5"H
 • **3X20BAS...** Balcony Height Base only, 36.5"H
 • **4X20BAS...** Bar Height Base only, 40.5"H

3YR



- TOP ONLY**
 • **T020... 54"** Round Table Top Only
- LEGS ONLY**
 • **3730LEG...** Coffee Height Legs only, 18"H
 • **3850LEG...** Dining Height Legs only, 29"H
 • **38100LG...** Balcony Height Legs only, 37"H
 • **38000LG...** Bar Height Legs only, 41"H

3YR



- TOP ONLY**
 • **TP20... 54"** Round Table Top Only
- 120LB WEIGHTED PEDESTAL BASE ONLY**
 • **2P50BAS...** Dining Height Base only, 29"H
 • **3P50BAS...** Balcony Height Base only, 37"H
 • **4P50BAS...** Bar Height Base only, 41"H

3YR



Symbol notates Dining table can be made ADA-Compliant using ADA0-PLG plugs shown on p.51

5YR = 5 Year Contract Warranty

3YR = 3 Year Contract Warranty



TOP ONLY **3YR**
 • **TM30...** 36" x 64" Rect. Table Top Only

PARSONS LEGS ONLY

- **8M00LEG...** Coffee Height Legs only, 18"H
- **5M00LEG...** Dining Height Legs only, 29"H
- **6M00LEG...** Balcony Height Legs only, 37"H
- **7M00LEG...** Bar Height Legs only, 41"H



TOP ONLY **3YR**
 • **TM40...** 64" Round Table Top Only

LEGS ONLY

- **2M00LEG...** Dining Height Legs only, 28.5"H
- **3M00LEG...** Balcony Height Legs only, 36.5"H
- **4M00LEG...** Bar Height Legs only, 40.5"H



TOP ONLY **NEW!** **3YR**
 • **TMB0...** 42"x84" Rect. Table Top Only

PARSONS LEGS ONLY

- **5ML0LEG...** Dining Height Legs only, 29"H
- **6ML0LEG...** Balcony Height Legs only, 37"H
- **7ML0LEG...** Bar Height Legs only, 41"H



TOP ONLY **3YR**
 • **TMK0...** 48" x 96" Rect. Table Top Only

PARSONS LEGS ONLY

- **5ML0LEG...** Dining Height Legs only, 29"H
- **6ML0LEG...** Balcony Height Legs only, 37"H
- **7ML0LEG...** Bar Height Legs only, 41"H

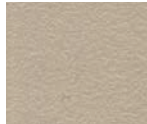
STANDARD MGP DASH TOP OPTIONS



P5D Snow



PYD Warm Grey



P6D Desert



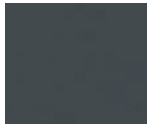
P4D Beachwood



P1D Kona



PFD Storm



P3D Classic
Graphite



P7D Black

ACCENT MGP DASH TOP OPTIONS



Items notated with Color Symbol are available with Accent MGP Top options.



PCD Cranberry



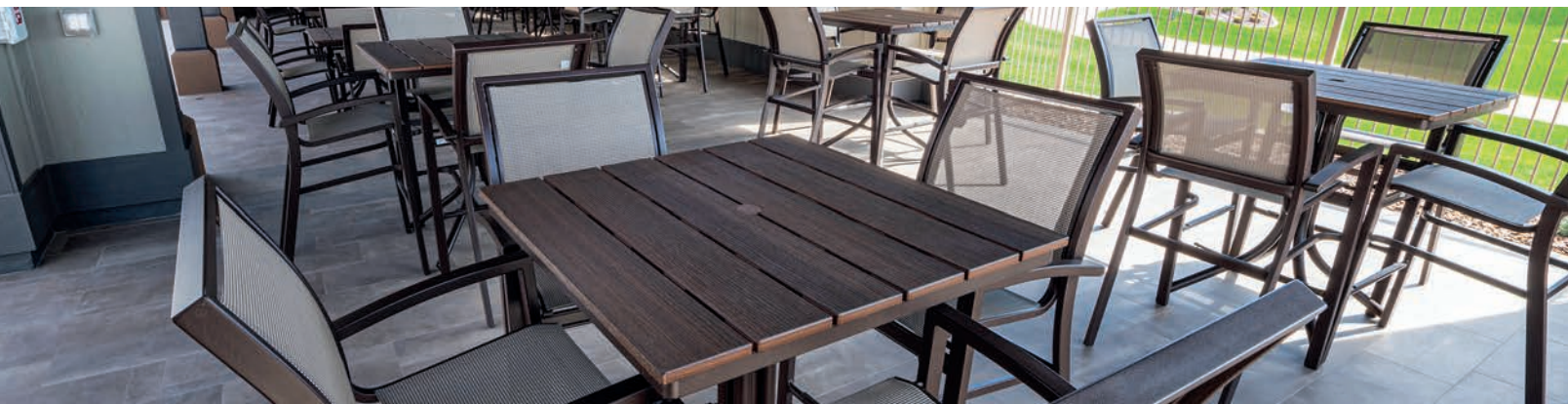
PHD Hunter



PQD Aqua



PND Navy



RUSTIC POLYMER TOP TABLES

Accessory, Coffee, Dining, Balcony & Bar Heights. All coffee, dining, balcony and bar tables feature umbrella holes unless otherwise noted. End tables have no holes. Heights listed below represent the overall height. See available colors on p. 61. Rustic Polymer Top Fire Tables shown on p.46.



5210... 10"x27" Rect.
Chaise Table
Overall Height: 19.5"
(smooth top only)

3YR



6M90... 17.5" Square
Side Table
Overall Height: 24.25"
(smooth top only)

3YR



5000... 21" Square
End Table
Overall Height: 19.5"

3YR



5140... 21" Round
End Table
Overall Height: 19.5"

3YR



5W80...23" Round
End Table
Overall Height: 19.75"
(smooth top only)

3YR



NL80...23" Round
End Table
Overall Height: 19.75"
(smooth top only)

3YR

NEW
2025

RUSTIC



3YR

50F0... 28.5"x28.5" Square Attachable Accessory Table, no hole (Compatible with Leeward & Larssen Cushion Sectionals)
Overall Height: 14"

NEW
2025

RUSTIC



3YR

50N0... 28.5"x28.5" Square Attachable Corner Table, no hole (Compatible with Leeward & Larssen Cushion Sectionals)
Overall Height: 21.5"

RUSTIC



3YR

50W0... 21" x 42" Rect. Coffee Table, no hole
Overall Height: 18"

RUSTIC



3YR

5W90... 24" x 42" Oval Coffee Table, no hole
Overall Height: 19.75" (smooth top only)

RUSTIC



3YR

NL30... 24" x 42" Oval Coffee Table, no hole
Overall Height: 19.75" (smooth top only)

RUSTIC



3YR

50Q0... 24" x 48" Coffee Table, no hole
Overall Height: 18"

RUSTIC



3YR

TOP ONLY
• **T300...** 18" x 54" Rect. Table Top Only
PARSONS LEGS ONLY
• **5M00LEG...** Dining Height Legs only, 29"H
• **6M00LEG...** Balcony Height Legs only, 37"H
• **7M00LEG...** Bar Height Legs only, 41"H

RUSTIC



3YR

TOP ONLY **NEW!**
• **TT20...** 36" Round Table Top Only

LEGS ONLY
• **2W50LEG...** Dining Height Legs only, 28.5"H
• **3W50LEG...** Balcony Height Legs only, 36.5"H
• **4W50LEG...** Bar Height Legs only, 40.5"H

RUSTIC



3YR

TOP ONLY **NEW!**
• **TT20...** 36" Round Table Top Only
80LB WEIGHTED PEDESTAL BASE ONLY
• **2P20BAS...** Dining Height Base only, 28.5"H
• **3P20BAS...** Balcony Height Base only, 36.5"H
• **4P20BAS...** Bar Height Base only, 40.5"H

RUSTIC



3YR

TOP ONLY **NEW!**
• **TT20...** 36" Round Table Top Only

PEDESTAL BASE ONLY
• **2X20BAS...** Dining Height Base only, 28.5"
• **3X20BAS...** Balcony Height Base only, 36.5"
• **4X20BAS...** Bar Height Base only, 40.5"

RUSTIC



3YR

TOP ONLY
• **T110...** 36" Square Table Top Only

LEGS ONLY
• **2W50LEG...** Dining Height Legs only, 28.5"H
• **3W50LEG...** Balcony Height Legs only, 36.5"H
• **4W50LEG...** Bar Height Legs only, 40.5"H

RUSTIC



3YR

TOP ONLY
• **T110...** 36" Square Table Top Only
80LB WEIGHTED PEDESTAL BASE ONLY
• **2P20BAS...** Dining Height Base only, 28.5"H
• **3P20BAS...** Balcony Height Base only, 36.5"H
• **4P20BAS...** Bar Height Base only, 40.5"H

RUSTIC



3YR

TOP ONLY
• **T110...** 36" Square Table Top Only

PEDESTAL BASE ONLY
• **2X20BAS...** Dining Height Base only, 28.5"H
• **3X20BAS...** Balcony Height Base only, 36.5"H
• **4X20BAS...** Bar Height Base only, 40.5"H

RUSTIC



3YR

TOP ONLY
• **TT10...** 36" Square Table Top Only
PARSONS LEGS ONLY
• **8M00LEG...** Coffee Height Legs only, 18"H
• **5M00LEG...** Dining Height Legs only, 29"H
• **6M00LEG...** Balcony Height Legs only, 37"H
• **7M00LEG...** Bar Height Legs only, 41"H

RUSTIC



3YR

TOP ONLY
• **T120...** 42" Round Table Top Only

LEGS ONLY
• **2W50LEG...** Dining Height Legs only, 28.5"H
• **3W50LEG...** Balcony Height Legs only, 36.5"H
• **4W50LEG...** Bar Height Legs only, 40.5"H

RUSTIC



3YR

TOP ONLY
• **T120...** 42" Round Table Top Only
80LB WEIGHTED PEDESTAL BASE ONLY
• **2P20BAS...** Dining Height Base only, 28.5"H
• **3P20BAS...** Balcony Height Base only, 36.5"H
• **4P20BAS...** Bar Height Base only, 40.5"H

RUSTIC



3YR

TOP ONLY
• **T120...** 42" Round Table Top Only

PEDESTAL BASE ONLY
• **2X20BAS...** Dining Height Base only, 28.5"H
• **3X20BAS...** Balcony Height Base only, 36.5"H
• **4X20BAS...** Bar Height Base only, 40.5"H

RUSTIC



3YR

TOP ONLY
• **T320...** 42" Round Table Top Only
PARSONS LEGS ONLY
• **8M00LEG...** Coffee Height Legs only, 19"H
• **5M00LEG...** Dining Height Legs only, 30"H
• **6M00LEG...** Balcony Height Legs only, 37.5"H
• **7M00LEG...** Bar Height Legs only, 41"H



TOP ONLY
• **TP90...** 42" Square Table Top Only

3YR



TOP ONLY
• **T090...** 42" Square Table Top Only

3YR

LEGS ONLY

- **3730LEG...** Coffee Height Legs only, 18"H
- **3850LEG...** Dining Height Legs only, 29"H
- **38100LG...** Balcony Height Legs only, 37"H
- **38000LG...** Bar Height Legs only, 41"H



TOP ONLY
• **TP90...** 42" Square Table Top Only

3YR

80LB WEIGHTED PEDESTAL BASE ONLY
• **2P20BAS...** Dining Height Base only, 28.5"H
• **3P20BAS...** Balcony Height Base only, 36.5"H
• **4P20BAS...** Bar Height Base only, 40.5"H



TOP ONLY
• **TM80...** 48" Round Table Top Only

3YR

LEGS ONLY
• **2280LEG...** Dining Height Legs only, 28"H



TOP ONLY
• **TM80...** 48" Round Table Top Only

3YR

120LB WEIGHTED PEDESTAL BASE ONLY
• **2P50BAS...** Dining Height Base only, 29"H
• **3P50BAS...** Balcony Height Base only, 37"H
• **4P50BAS...** Bar Height Base only, 41"H



TOP ONLY
• **TM80...** 48" Round Table Top Only

3YR

PEDESTAL BASE ONLY
• **2X20BAS...** Dining Height Base only, 28.5"H
• **3X20BAS...** Balcony Height Base only, 36.5"H
• **4X20BAS...** Bar Height Base only, 40.5"H



TOP ONLY
• **T020...** 54" Round Table Top Only

3YR

LEGS ONLY
• **3730LEG...** Coffee Height Legs only, 18"H
• **3850LEG...** Dining Height Legs only, 29"H
• **38100LG...** Balcony Height Legs only, 37"H
• **38000LG...** Bar Height Legs only, 41"H



TOP ONLY
• **TP20...** 54" Round Table Top Only

3YR

120LB WEIGHTED PEDESTAL BASE ONLY
• **2P50BAS...** Dining Height Base only, 29"H
• **3P50BAS...** Balcony Height Base only, 37"H
• **4P50BAS...** Bar Height Base only, 41"H



• **1P80...** 32" x 64" Rect. Top Picnic Table

5YR

Overall Height: 29"
Overall Footprint: 64" x 66"



TOP ONLY
• **TM30...** 36" x 64" Rect. Table Top Only

3YR

PARSONS LEGS ONLY
• **8M00LEG...** Coffee Height Legs only, 18"H
• **5M00LEG...** Dining Height Legs only, 29"H
• **6M00LEG...** Balcony Height Legs only, 37"H
• **7M00LEG...** Bar Height Legs only, 41"H



TOP ONLY
• **TM00...** 62" Hexagonal Table Top Only

3YR

LEGS ONLY
• **2M00LEG...** Dining Height Legs only, 28"H
• **3M00LEG...** Balcony Height Legs only, 36"H
• **4M00LEG...** Bar Height Legs only, 40"H



TOP ONLY
• **TM40...** 64" Round Table Top Only

3YR

LEGS ONLY
• **2M00LEG...** Dining Height Legs only, 28.5"H
• **3M00LEG...** Balcony Height Legs only, 36.5"H
• **4M00LEG...** Bar Height Legs only, 40.5"H



TOP ONLY
• **T160...** 64" Square Table Top Only

3YR

LEGS ONLY
• **3850LEG...** Dining Height Legs only, 29"H
• **38100LG...** Balcony Height Legs only, 37"H
• **38000LG...** Bar Height Legs only, 41"H



TOP ONLY **NEW!**
• **TMB0...** 42"x84" Rect. Table Top Only

3YR

PARSONS LEGS ONLY
• **5ML0LEG...** Dining Height Legs only, 29"H
• **6ML0LEG...** Balcony Height Legs only, 37"H
• **7ML0LEG...** Bar Height Legs only, 41"H



Symbol notates Dining table can be made ADA-Compliant using ADA0-PLG plugs shown on p.51



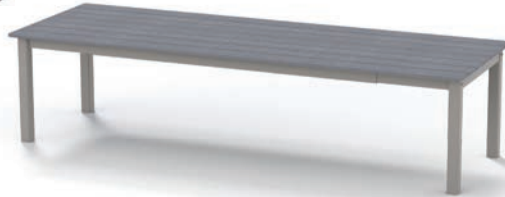
TOP ONLY

- **TMK0...**48" x 96" Rect. Table Top Only

3YR

PARSONS LEGS ONLY

- **5ML0LEG...** Dining Height Legs only, 29"H
- **6ML0LEG...** Balcony Height Legs only, 37"H
- **7ML0LEG...** Bar Height Legs only, 41"H

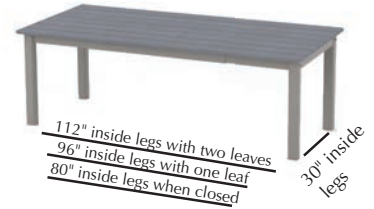


5290... 42"x120" Extension Table

Overall Height: 29.25"

42"x88" overall when not extended
Two drop-in leaves included
Leaves store under each end

3YR



RUSTIC POLYMER TOP OPTIONS



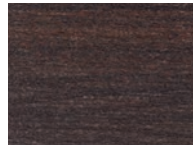
Items notated with Rustic Symbol are available with Rustic Polymer Top options.



RG0 Cape Grey



RX0 Boardwalk



RU0 Chestnut



RT0 Teak



RL0 Laguna



ORIGINS TOP TABLES

Accessory, Coffee, Dining, Balcony & Bar Heights. All coffee, dining, balcony and bar tables feature umbrella holes unless otherwise noted. End tables have no hole. Heights listed below represent the overall height. Origins Top Fire Table Shown on p.47.



CT10...21" Round End Table

3YR

Overall Height: 19.5"



CTW0...21"x42" Rect. Coffee Table, no hole

3YR

Overall Height: 18"



TOP ONLY

- **CP40...**42" Square Table Top Only

3YR

PEDESTAL BASE ONLY

- **2X20BAS...** Dining Height Base only, 28.5"H
- **3X20BAS...** Balcony Height Base only, 36.5"H
- **4X20BAS...** Bar Height Base only, 40.5"H



TOP ONLY

- **CT40...**42" Square Table Top Only

3YR

LEGS ONLY

- **3730LEG...** Coffee Height Legs only, 18"H
- **3850LEG...** Dining Height Legs only, 29"H
- **38100LG...** Balcony Height Legs only, 37"H
- **38000LG...** Bar Height Legs only, 41"H



TOP ONLY

- **CP40...**42" Square Table Top Only

3YR

80LB WEIGHTED PEDESTAL BASE ONLY

- **2P20BAS...** Dining Height Base only, 28.5"H
- **3P20BAS...** Balcony Height Base only, 36.5"H
- **4P20BAS...** Bar Height Base only, 40.5"H

5YR = 5 Year Contract Warranty

3YR = 3 Year Contract Warranty




TOP ONLY
• **CT60...** 54" Round Table Top Only

3YR



TOP ONLY
• **CP60...** 54" Round Table Top Only

3YR

LEGS ONLY 
• **3730LEG...** Coffee Height Legs only, 18"H
• **3850LEG...** Dining Height Legs only, 29"H
• **38100LG...** Balcony Height Legs only, 37"H
• **38000LG...** Bar Height Legs only, 41"H

120LB WEIGHTED PEDESTAL BASE ONLY
• **2P50BAS...** Dining Height Base only, 29"H
• **3P50BAS...** Balcony Height Base only, 37"H
• **4P50BAS...** Bar Height Base only, 41"H

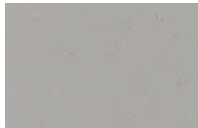


TOP ONLY **NEW!**
• **CT90...** 42"x84" Rect. Table Top Only

3YR

PARSONS LEGS ONLY
• **5ML0LEG...** Dining Height Legs only, 29"H
• **6ML0LEG...** Balcony Height Legs only, 37"H
• **7ML0LEG...** Bar Height Legs only, 41"H

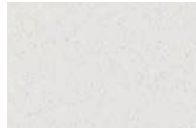
ORIGINS TABLE TOP OPTIONS



A31 New Concrete



A32 Palermo



A33 Nordic



Symbol notates Dining table can be made ADA-Compliant using ADA0-PLG plugs shown on p.51

RECENT INSTALLATIONS



THE RESORT AT MASSEY'S LANDING
MILLSBORO, DE



MAKE-A-WISH
TRUMBULL, CT



ACTIVE INGREDIENT BREWING COMPANY
MALTA, NY

RECENT INSTALLATIONS



**BAY 151 APARTMENTS
BAYONNE, NJ**



**SOAKY MOUNTAIN WATERPARK
SEVIERVILLE, TN**



**LAKE GEORGE RV PARK,
LAKE GEORGE, NY**

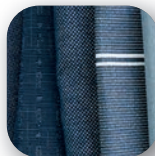


**THE MONTAGE
ALBANY, NY**

PROPER CARE, CLEANING & MAINTENANCE OF COMMERCIAL FURNITURE

Telescope Casual Furniture Inc. suggests allocating 1-2% of your original purchase price as an annual budget for repair and replacement parts. This includes touch up paint, slings/cushions, plastic plugs, bolts, arm caps, etc. Telescope Casual manufactures and supplies replacement parts directly from our factory. Most parts are inexpensive, easy to replace, and can greatly lengthen the lifespan of your furniture! The following document outlines suggested care and maintenance for Telescope Casual Furniture.

SLING MAINTENANCE:



- Slings should be cleaned once for every two months of use. For example, if furniture is used 12 months out of the year, we suggest cleaning (6) times.
- Slings should be cleaned prior to storage!
- To clean, simply use a dish soap and water mixture and hose or wipe off with clean water. Air dry in the sun! Stubborn or stuck stains can be cleaned using a bleach mixture (one cup of bleach per gallon of water). Scrub the affected area with a soft bristle brush. and wash off thoroughly. Please do not use power washers on sling. If the PSI is too high, you can tear the sling.

Why is cleaning sling important?

Slings are made from Vinyl Coated Polyester. Along with vinyl coating, there are UV inhibitors applied. When certain chemicals are left in contact with the coating (sunscreen, chlorine, soft drinks, etc.) it can degrade the coating and the UV inhibitors. This can lead to a higher rate of fading, and eventually a brittle feel to the sling. PVC sling is extremely durable and very minor care can make them look great for many years.

FRAME MAINTENANCE:



Structural;

- We suggest a quarterly inspection of the frames, reviewing the structural components. Please make sure all bolts are secure and tighten any that may have loosened slightly.
- Check foot plugs and plastic bumpers as they receive heavy wear and tear on pool decks. Missing foot plugs, or plugs worn down to the frame can cause damage to the powdercoat finish and compromise the strength of the frame. If the chaise is off balance, it can stress the connection points and welds and cause frame failure.
- Allocating 1% of your budget to having extra parts on hand will help make maintenance of the furniture faster and easier.

Aesthetic;

- Powdercoat frames - Cleaning of powdercoat is mostly cosmetic and there are no structural benefits. Soft scrub or similar non-abrasive products can remove scuff marks and scratches. Cleaning the frame will remove chemicals and the frame will retain high gloss finish longer.
- Touch-up paint is available to cover any deep abrasions that expose the raw aluminum. Aluminum when exposed is subject to corrosion and can lead to peeling or cracking. Touch up paint is your best remedy to avoid this!
- MGP frames - can be cleaned via hose or low PSI pressure wash. MGP is not subject to corrosion.

CUSHION MAINTENANCE:



- Telescope cushions have a sleeve on the back that goes over the frame to keep it in place or Velcro tabs to secure the cushion to the frame. These are important to use, keeping the cushion in place. Improper wear can occur when cushions are not attached.
- Cushions should be cleaned once per two months of use. For example, if furniture is used 12 months out of the year, we suggest cleaning (6) times. Cushions should be cleaned prior to storage. Please follow similar cleaning instructions to Sling furniture.

Why is cleaning Cushions important?

Cushion are made from 100% solution dyed acrylic. There is some water and stain repellency, but this is a more absorbent material than PVC sling. Staining is more common if not cleaned.

UMBRELLAS MAINTENANCE:



- Umbrellas must be close at the end of the workday. Umbrellas should remain closed in strong, sustained winds. All tables and free-standing umbrella bases have thumb screws to tighten the umbrella pole and hold into space, these must always remain tight. Failure to do so can cause the umbrella to be lifted by the wind and damage the frame or the table.

TABLE TOPS MAINTENANCE:



- Standard countertop cleaners and protectors can be used on table tops. Some of our table base options are weighted with 80+ pounds. Please use care and caution when moving tables with weighted bases.

For more information contact your local Telescope Contract Furniture supplier or Contact the following:

NATIONAL SALES MANAGER

Matt Pisani
82 Church St. Granville, NY 12832
Phone (518) 642-1100 x367
MPisani@TelescopeCasual.com

FACTORY & CORPORATE HEADQUARTERS

Telescope Casual Furniture, Inc.
82 Church Street
Granville, NY 12832
Phone (518) 642-1100 Fax (518) 642-2536

LIMITED WARRANTY

For clarity in this Contract Catalog, we use the following terminology to indicate the contract warranty.
5yr = 5 Year Contract Warranty. **3yr** = 3 Year Contract Warranty. **1yr** = 1 Year Contract Warranty.

Limited Warranty

Frames and Powder Coat: If your Telescope powder coat aluminum frame, marine grade polymer frame, or rustic polymer frame fails structurally during normal usage within the applicable warranty period (as defined below), we will repair or replace the frame without charge, parts and labor included. (In the case of discontinued models or finishes, we will replace the item with the closest comparable current model.) If Telescope agrees to have an authorized dealer make the repairs, a maximum labor charge must be agreed upon by both Telescope and the dealer before work can commence. Products covered by our frame warranty are identified in our catalog as either **15/5**, **15/3**, **15/1** or no identification at all. **15/5** indicates a frame warranty period of 15 years in residential use/5 years in contract use. **15/3** indicates a frame warranty period of 15 years in residential use/3 years in contract use. **15/1** indicates a frame warranty period of 15 years in residential use/1 year in contract use. No indication indicates a frame warranty period of 1 year in residential use and that there is no frame warranty in contract use. All warranty periods commence on the date of purchase by the consumer or contract customer. Contract use includes any rental, business, commercial, institutional, or other non-residential use.

Marine Grade Polymer and Rustic Polymer materials used in our products are warranted against rot, cracking, splintering and decay for the length of the applicable warranty period defined above.

The powder coat finish on our powder coat aluminum frame furniture is warranted against peeling, cracking or blistering for a period of 3 years from the date of purchase. Failure of the powder coat finish due to abrasion, including abrasion caused by stacking the furniture against other furniture or scraping against other surfaces, is not covered by this warranty. Exposure to salt water or salt air may cause powder coat finishes to blister due to oxidization of the metal; such blistering and oxidization are not covered by this warranty. Fading, staining and scratching of marine grade polymer or rustic polymer surfaces is not covered by this warranty. Rusting of any steel or stainless steel components is not covered by this warranty.

The following products are not covered by our frame and powder coat warranties: table tops, umbrellas, umbrella bases, wood furniture, cushions, slings, straps, and folding aluminum furniture.

Non-Glass Table Tops: Non-glass table tops are warranted to be free from manufacturing defects for 3 years from date of purchase. Fading or staining of the table surface is not included under warranty. Tables must not be stored upside down.

Umbrellas and Umbrella Bases: Umbrella frames and umbrella bases are warranted to be free of manufacturing defects for either 1 year or 3 years from the date of purchase, as identified in our catalog and price lists by the following indicators: **3/3** indicates 3 years in residential use/3 years in contract use; **1/1** indicates 1 year in residential use/1 year in contract use. Steel bases, if not properly maintained, will rust if the finish is scratched through to the metal. Rust is not covered under warranty. Umbrella covers/fabric are warranted to be free from manufacturing defects for 1 year from the date of purchase.

Wood Furniture, Cushions, Slings, and Folding Aluminum Furniture: Wood furniture, cushions, slings, and folding aluminum furniture are warranted to be free of manufacturing defects for 1 year from the date of purchase.

Vinyl Straps: Vinyl straps are warranted against breakage and gross discoloration for a period of 3 years from the date of purchase. In the case of breakage or gross discoloration (our judgment), replacement straps will be provided but labor is not included.

Fire Table Burner Warranty: The burner and control panel are warranted by the manufacturer to be free from defects in material and workmanship for a period of one year from its date of purchase. Please refer to the full warranty in the user manual included in the burner unit packaging.

Patio Heater Warranty: The burner and controls are warranted to be free of manufacturing defects for a period of one year from date of purchase. Bending or denting the aluminum deflector is not covered under warranty. Damage caused by the heater tipping over is not covered under warranty.

Other Warranty Limitations and Exclusions: The natural weathering of wood finishes, breakage of glass, fading, staining and mildewing of fabrics, slings and strapping, the compression of cushion fillings, the stretching of slings, and the rusting of umbrella bases or pedestal bases are not covered under our warranties. Warranty is void unless routine maintenance of product is performed, such as tightening of screws and bolts, regular care and cleaning.

Furniture Covers: Telescope Furniture covers are warranted to be free of manufacturing defects for one year from date of purchase. Furniture covers not made by Telescope Casual Furniture, Inc. could cause damage to the surface finish of our furniture. Such damage is not covered by this warranty.

Freeze or ice damage is not covered by our warranties. Furniture stored outside or in other cold storage should be drained of any water. If allowed to freeze inside the furniture, water can damage the tubing.

These warranties do not cover the failure of furniture caused by acts of God, accident, neglect, improper shipping or handling, or by unreasonable or abusive use, and these warranties are void if our care and maintenance instructions were not properly followed. Furniture used in a contract (commercial) setting is not warranted unless it is specifically designated for contract or commercial use in our catalog.

All warranties are to the original purchaser from authorized dealers only. Warranties are not transferable. Warranties are for repair, replacement or substitution only, in our sole discretion. **Warranty service of any kind does not extend the warranty period.**

THESE WARRANTIES ARE IN LIEU OF ANY OTHER WARRANTIES, EXPRESS OR IMPLIED, INCLUDING BUT NOT LIMITED TO, THE IMPLIED WARRANTIES OF MERCHANTABILITY AND FITNESS FOR A PARTICULAR PURPOSE. IN NO EVENT WILL TELESCOPE CASUAL FURNITURE, INC. BE LIABLE FOR INCIDENTAL OR CONSEQUENTIAL DAMAGES, EVEN IF IT HAD REASON TO KNOW IN ADVANCE THAT SUCH DAMAGES WERE POSSIBLE. THESE WARRANTIES GIVE YOU SPECIFIC LEGAL RIGHTS AND YOU MAY HAVE OTHER RIGHTS THAT VARY FROM JURISDICTION TO JURISDICTION. SOME JURISDICTIONS DO NOT ALLOW THE EXCLUSION OF IMPLIED WARRANTIES OR THE LIMITATION OF DAMAGES, SO THE ABOVE EXCLUSION AND LIMITATIONS MAY NOT APPLY TO YOU. IN THE EVENT THE WARRANTY EXCLUSIONS DO NOT APPLY TO YOU, THEN, WHERE LEGALLY PERMISSIBLE, SUCH WARRANTIES ARE LIMITED IN DURATION TO THE APPLICABLE WARRANTY PERIOD AND NO WARRANTIES APPLY AFTER THAT PERIOD.

How to Obtain Warranty Service: If you are a consumer, first go to an authorized Telescope dealer. If the dealer cannot resolve the issue, they must contact our Customer Service Department in writing at Telescope Casual Furniture, Inc., 82 Church Street, Granville, NY 12832 or email to warranty@TelescopeCasual.com, stating the problem, providing pictures and providing proof of purchase. A Return Merchandise Authorization Request Form will be sent to the dealer requesting details and giving instructions for returning items if necessary. If the Request is approved, the dealer will receive a Return Merchandise Authorization Number. No returns will be accepted without prior written authorization from our Customer Service Department. After authorization is received the furniture must be returned to us in proper packaging, freight prepaid, with the Return Merchandise Authorization Number clearly marked on the cartons. Telescope will cover the cost of shipping repaired or replacement items only to addresses within the contiguous 48 United States.

Shipping Policy

Warehousing Fees: Any retail or commercial order stored at the factory due to a delay caused by the customer is subject to warehousing fees at our discretion.

No portion of this publication may be reproduced or copied without the express written consent of Telescope Casual Furniture, Inc.
© 2024 Telescope Casual Furniture, Inc. All rights reserved.



National Sales Manager

MATT PISANI

82 CHURCH STREET. GRANVILLE, NY 12832

(518) 642-1100 x367

MPisani@TelescopeCasual.com

Factory & Corporate Headquarters

82 Church Street

Granville, New York 12832 USA

(518) 642-1100

Fax (518) 642-2536

Proudly Made in the USA - Since 1903

**FOR A FULL LIST OF CONTRACT SALES REPRESENTATIVES PLEASE VISIT:
www.TelescopeContract.com**